



Cognito Motorsports Inc. RIGID Q2 LED light (not included) mounting kit for Cognito front bumper, Polaris RZR XP1000/XPTurbo

Introduction

- Installation requires a qualified mechanic.
- Read instructions carefully and study the pictures before attempting installation.
- Check the parts and hardware packages against the parts list to assure that your kit is complete.
- Always wear safety glasses when using power tools.
- This instruction set available in color on www.cognitomotorsports.com

Requirements

- This light bracket kit is specifically designed to mount the RIGID Industries Q2 LED light, onto a Cognito front bumper.
- This kit has nothing to do with the wiring installation, only the mounting installation.

Parts List

- (1) 2155, mounting bracket
- (1) HP9168, hardware pac
 - (2) 3/8-16x1.25" hex bolt
 - (2) 3/8-16 hex nut
 - (2) 3/8 lock washer
 - (4) 3/8 flat washer
 - (2) 8mm x 1.25 hex bolt 30mm long
 - (2) 6mm x 1.0 hex bolt 22mm long

Installation

1. The Cognito front bumper has 2 holes in the upper frame bracket, that line up with 2 stock frame holes, this is where the bracket will bolt on. The stock frame holes are shown in the center of figure 1
2. Some of the hardware that came with the Rigid Q2 light will be used, and some of it will be replaced with the hardware provided in the light mounting kit.

3. From the light hardware kit, install the 8mm hex nuts into the slots in the light as shown in Figure 2. Then install the 6mm square nuts into the slot as shown in Figure 3. Then install the plastic nut holders and install them as shown in Figure 4.



Figure 1: the stock frame holes that will be used, the bumper will be installed first and is not shown.



Figure 2: hex nuts come with the light



Figure 3: square nuts come with the light



Figure 4: plastic nut holders come with the light

4. Locate the two 8mm hex bolts and the two 6mm hex bolts from the hardware pack included. These are replacing the socket head cap screws included with the light kit because there is not enough room to get an allen wrench in place to adjust the angle of the light when installed.
5. Locate the 8mm and 6mm lock washers and flat washers from the hardware pack that was included with the light. Install lock washer first, then flat washer, and then bolt the bracket onto the light loosely as shown in Figure 5
6. Using the 3/8" hardware included in this bracket kit, bolt the bracket to the Cognito front bumper. Use the bolt with flat washer, then insert bolt thru holes, then use flat washer, then lock washer, then hex nut. Tighten to 30 ft.lbs.
7. With the car at proper ride height, adjust the angle of the light, then tighten the 8mm and 6mm hex bolts to secure the light to the bracket. These are small bolts, do not overtighten, there is no room for torque wrench.

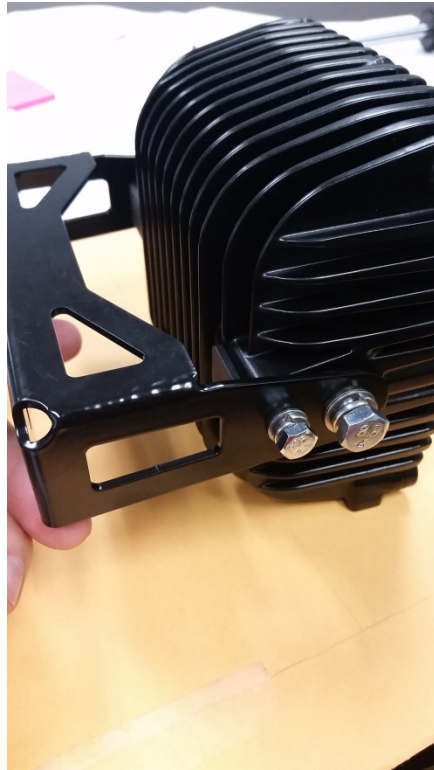


Figure 5: bolt bracket onto light using bolts from the bracket kit and washers from the light kit.

Cognito Motorsports

Limited Lifetime Warranty

Cognito Motorsports warrants, to the original retail purchaser, that its suspension products are free from defects in workmanship and material for as long as the purchaser owns the vehicle on which the product was originally installed. Cognito Motorsports does not warrant the product for finish, alterations, modifications, and/or original installation contrary to specifications of Cognito Motorsports. Cognito Motorsports suspension products are not designed nor intended to be installed on vehicles used in race applications or for racing purposes or for similar activities involving abnormal abuse other than the vehicle was originally designed to handle or endure. (A “RACE” is defined as any contest between two or more vehicles, and/or contest of one or more vehicle against the clock, whether or not such contest is for a prize.)

This warranty is for a one-time replacement of each Cognito Motorsports product and does not cover any part that Cognito Motorsports has previously replaced under this warranty. This warranty does not include coverage for police or taxi vehicles, race vehicles, or vehicles used for government or commercial purposes. Also excluded from this warrant are sales outside of the United States of America. Alterations to the finish of the parts including but not limited to painting, powder coating, plating, and/or welding will void all warranties. Cognito Motorsports obligation under this warranty is limited to the repair or replacement, at Cognito Motorsports option of the defective product. Any and all costs of removal, installation or re-installation, freight charges, incidental or consequential damages are expressly excluded from this warranty.

This warranty excludes the following items: bushings, bumpstops, tie-rod ends, limiting straps, and heim joints. These parts are subject to wear and are not considered defective when worn. They are warranted for 60 days of purchase for defects in workmanship. Cognito Motorsports suspension components must be installed as a complete system. Any substitutions or exemptions of required components will immediately void the warranty. Some finish damage may happen to parts during shipping and is not covered under warranty. This warranty shall not apply to any product that had been subject to accident, negligence, alteration, abuse, or misuse. Cognito Motorsports does not warrant products not manufactured by Cognito Motorsports. Cognito Motorsports reserves the right to supersede, discontinue, or change the design, finish, part number and/or application of parts when deemed necessary by Cognito Motorsports without written notice, and in the sole and absolute discretion of Cognito Motorsports.

Warranty Claims

All warranty claims must be submitted through the original company of purchase. All claims must be shipped back to the original company of purchase with an approved RMA number listed as a reference on the shipping label and clearly printed on two opposing sides of the package(s); product in question must be inspected by Cognito Motorsports before replacement parts are shipped out.

Return Policy

Cognito Motorsports has a no refund return policy. Under special circumstances, returns might be accepted with prior written approval. All returned product will be shipped freight prepaid. Product returned is subject to a 25% restocking fee. No returns will be accepted after 30 days upon receipt of product.

Product Consumer Safety and Warning

The installation of this kit will modify the suspension of your vehicle and may cause it to handle significantly different than a factory equipped vehicle. Installing larger tires with modified suspension and increased ground clearance will significantly alter the handling characteristics of the vehicle, and may result in increased braking distances as well as changes in vehicle maneuverability and handling compared to the factory equipped vehicle. As with any vehicle, extreme caution and care must be used to prevent loss of control or roll-over during sharp turns or abrupt maneuvers. Always wear seat belts and drive safely, recognizing the reduced speeds and specialized driving techniques is required.

This suspension system will not strengthen nor reinforce the stock frame of the vehicle, nor will it increase rollover protection. It is necessary to periodically inspect all suspension and drive train components for tightness of fit or any damage. Installation of these parts will modify the height of the vehicle and will raise the center of gravity. Altered height modifications and off-road operation may increase your vehicle’s susceptibility to roll over conditions and may cause serious injury or death. Many states regulate the height modification to each vehicle. Check the laws in your state for exact specifications. Height modifications may affect the reaction, ride, handling, and wear factor of your vehicle’s components.

Failure to drive this vehicle safely may result in injury or death! Do not drive this vehicle unless you are familiar with its unique handling characteristics and are confident of your ability to maintain control under all driving conditions. Some modifications and combinations of modifications are not recommended, unsafe, and may not be permitted in your state. Consult your vehicle owner’s manual, the instructions accompanying this product, and your state laws before undertaking these modifications. The owner of the modified vehicle and the qualified mechanic required to install this product are responsible for the legality and safety of the vehicle being modified.