



RUST BUSTER

RB7828L & RB7828R
Center Bed Mount
2011-2018 Chevy Silverado 2500HD
2011-2018 GMC Sierra 2500HD



VIDEO AVAILABLE



REQUIRED TOOLS

Jack Stands or Lift
Mig Welder
Paint/Primer
Hand Grinder
Cutting Wheel or Torch
Welding Gloves
Welding Hood/Shield
Ear & Eye Protection
Sockets & Wrench
Fire Extinguisher
Mallet

KIT CONTAINS

Center Bed Mount

QTY

1



RUST BUSTER

RB7828L & RB7828R Center Bed Mount 2011-2018 Chevy Silverado 2500HD 2011-2018 GMC Sierra 2500HD

1) PREPARING YOUR VEHICLE

Begin by disconnecting your battery prior to starting your installation.

Inspect your vehicle for leaking fuel lines, fuel tank and engine components. If you have fuel leaks repair all leaks prior to starting your installation. If your fuel tank is near your welding area **remove your tank prior to welding.**

Remove all combustible items above the work area such as seats, carpets, padding, etc.

Keep all flammable materials away from the vehicle work area.

2) PREPARING YOUR WORKSTATION

Keep a fire extinguisher close by in the case of fire and make sure you always have a designated "Fire Watch" to assist during the cutting or welding phases.

Abide by all apprenticed welding safety standards and practices.

Always use appropriate welding eye protection, ear protection, and work and fire safety gloves during the installation and within the work area.



WARNING!

If you are unsure on how to perform the installation or how to operate any of the required tools listed above, it is **HIGHLY** advised that you enlist the work of a certified welder/installer.

Failure to follow proper safety precautions and instructions may result in serious injury. **The user assumes all liability when installing the product.**



RUST BUSTER

RB7828L & RB7828R Center Bed Mount 2011-2018 Chevy Silverado 2500HD 2011-2018 GMC Sierra 2500HD

3) PREPARING FOR YOUR INSTALL

Lift up or remove your vehicles bed. Remove your bed mounts bolt.

4) CUT

Cut off the factory center bed mount and any obstructions in the work area.



Grind the frame free of rust and debris, revealing bare metal.



Spray the work area with a weld-through primer to help prevent the risk of rust development.



5) WELD

Take your replacement center bed mount and hold it up to the frame using the factory parts silhouette to help with the alignment.

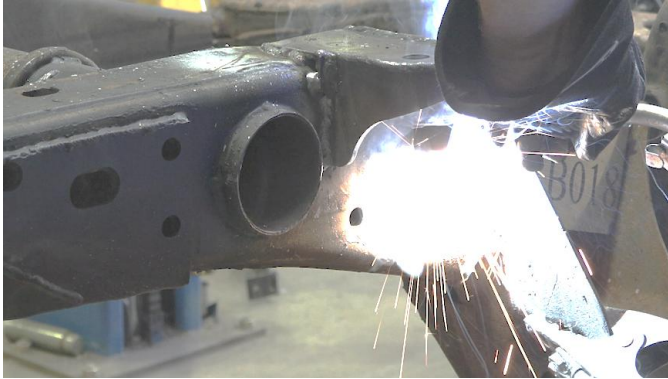




RUST BUSTER

RB7828L & RB7828R Center Bed Mount 2011-2018 Chevy Silverado 2500HD 2011-2018 GMC Sierra 2500HD

Following proper welding procedures, tac weld your center bed mount onto the frame before welding it on fully. Weld 100% around all edges.



6) PAINT

Paint the part with primer or other rust inhibitor to help prevent or reduce the risk of rust formation.

We recommend our Rust Buster Rust Converter & Primer Spray Paint (RB9917).



7) REINSTALL

Reinstall your bed mounts bolt and your bed.