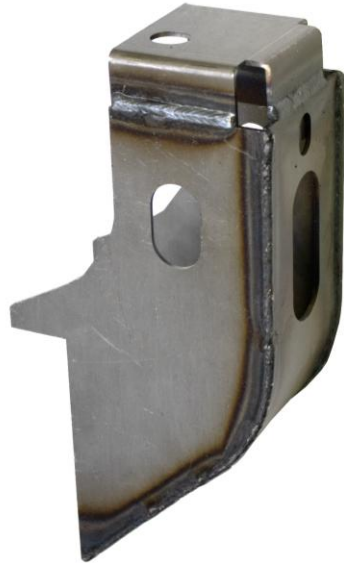




RUST BUSTER

RB7736L & RB7736R
2009-2018 Dodge Ram 1500
Forward Bed Mount



REQUIRED TOOLS

Jack Stands or Lift
Mig Welder
Paint/Primer
Hand Grinder
Cutting Wheel or Torch
Welding Gloves
Welding Hood/Shield
Ear & Eye Protection
Sockets & Ratchet
Fire Extinguisher
C-Clamps

KIT CONTAINS

Forward Bed Mount

QTY

1



RUST BUSTER

RB7736L & RB7736R 2009-2018 Dodge Ram 1500 Forward Bed Mount

1) PREPARING YOUR VEHICLE

Begin by disconnecting your battery prior to starting your installation.

Inspect your vehicle for leaking fuel lines, fuel tank and engine components. If you have fuel leaks repair all leaks prior to starting your installation. If your fuel tank is near your welding area **remove your tank prior to welding.**

Remove all combustible items above the work area such as seats, carpets, padding, etc.

Keep all flammable materials away from the vehicle work area.

2) PREPARING YOUR WORKSTATION

Keep a fire extinguisher close by in the case of fire and make sure you always have a designated "Fire Watch" to assist during the cutting or welding phases.

Abide by all apprenticed welding safety standards and practices.

Always use appropriate welding eye protection, ear protection, and work and fire safety gloves during the installation and within the work area.



WARNING!

If you are unsure on how to perform the installation or how to operate any of the required tools listed above, it is **HIGHLY** advised that you enlist the work of a certified welder/installer.

Failure to follow proper safety precautions and instructions may result in serious injury. **The user assumes all liability when installing the product.**



RUST BUSTER

RB7736L & RB7736R 2009-2018 Dodge Ram 1500 Forward Bed Mount

3) CUT

Remove the factory forward body mount using a torch or other cutting tool.



Using a grind wheel, remove any rust and debris around the mount location.



4) PREPARING FOR YOUR INSTALL

Spray the work area with a weld-through primer to prevent future rust formation.



5) WELD

Using the markings from the original mount, line up the bed mount on the frame rail. Following proper welding procedures, tack weld the part to the frame before fully welding it on. Weld 100% around all edges.



6) PAINT AND PROTECT

Coat the part and work area with a primer or other rust inhibitor to help prevent or reduce the risk of rust formation. We recommend our Rust Buster Rust Converter and Primer Spray Paint (RB9917).

