



RUST BUSTER

RB7437L & RB7437R
Mid Frame Repair Kit
1973-1991 Chevy K5 Blazer/GMC Jimmy



VIDEO AVAILABLE



REQUIRED TOOLS

Jack Stands or Lift
Mig Welder
Paint/Primer
Hand Grinder
Cutting Wheel or Torch
Welding Gloves
Welding Hood/Shield
Ear & Eye Protection
Sockets & Wrench
Fire Extinguisher
Tape Measure
Paint Marker or Chalk
C-Clamps
Mallet

KIT CONTAINS

Mid Frame Section
M10 35mm Flanged Hex Screw
M10 25mm Flanged Hex Screw
M10 Flange Locknut

QTY

1
6
2
8



RUST BUSTER

RB7437L & RB7437R Mid Frame Repair Kit 1973-1991 Chevy K5 Blazer/GMC Jimmy

1) PREPARING YOUR VEHICLE

Begin by disconnecting your battery prior to starting your installation.

Inspect your vehicle for leaking fuel lines, fuel tank and engine components. If you have fuel leaks repair all leaks prior to starting your installation. If your fuel tank is near your welding area **remove your tank prior to welding.**

Remove all combustible items above the work area such as seats, carpets, padding, etc.

Keep all flammable materials away from the vehicle work area.

2) PREPARING YOUR WORKSTATION

Keep a fire extinguisher close by in the case of fire and make sure you always have a designated "Fire Watch" to assist during the cutting or welding phases.

Abide by all apprenticed welding safety standards and practices.

Always use appropriate welding eye protection, ear protection, and work and fire safety gloves during the installation and within the work area.



WARNING!

If you are unsure on how to perform the installation or how to operate any of the required tools listed above, it is **HIGHLY** advised that you enlist the work of a certified welder/installer.

Failure to follow proper safety precautions and instructions may result in serious injury. **The user assumes all liability when installing the product.**



RUST BUSTER

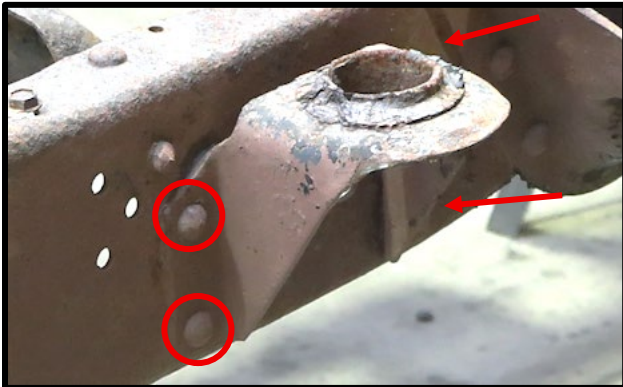
RB7437L & RB7437R Mid Frame Repair Kit

1973-1991 Chevy K5 Blazer/GMC Jimmy

3) PREPARING FOR YOUR INSTALL

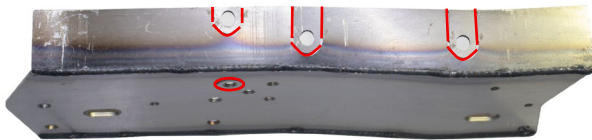
Remove your vehicle's **body mount bolts**, lift the **body** off the frame, and remove the **body mount bushings**.

4) CUT



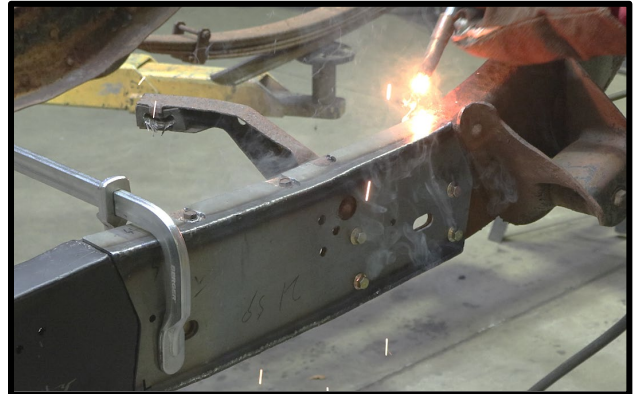
Cut off the rivet heads holding the **center body mount**, and use a hammer and punch to remove the studs from the holes. Take care to avoid damaging the **body mount**, as it will be re-installed later if you do not a replacement.

NOTE



This part features **perforations** to accommodate the exhaust hanger. If you are not replacing that part at this time, **remove** the corresponding perforations. If you are replacing that part, remove **the factory part** now.

5) WELD



Remove any **frame rot or rust** in the work area, and spray the work area with a **weld-through primer**. Slide the frame section on to the frame, using the frame holes for alignment. Using **C-clamps**, secure the **frame section** to the frame rail. You can also use the included body mount hardware to secure the frame section. Following proper welding procedure, **tac-weld the part** in place prior to **welding all edges fully**.

6) RE-INSTALL

Using the **included hardware**, bolt the **body mount** back on to the frame.

7) PAINT



Paint the **part and work area** with **rust inhibitor** (such as our Rust Buster Rust Converter and Primer Spray Paint – RB9917) to **prevent or reduce future rust formation**.



**RUST
BUSTER**

**RB7437L & RB7437R
Mid Frame Repair Kit
1973-1991 Chevy K5 Blazer/GMC Jimmy**

8) RE-INSTALL

Re-install the **body mount bushings**, lower the body back on to the frame, and re-install the **body mount bolts**.