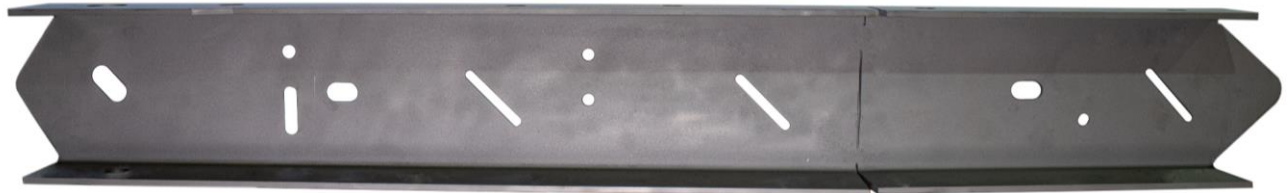




**RUST
BUSTER**
FRAMEWORKS

RB7304L/R & RB7303
Chevy/GMC® 88-98 K1500/2500
Over Axle Frame Section



REQUIRED TOOLS

Jack Stands or Lift
Mig Welder
Paint/Primer
Locking Pliers
Hand Grinder
Cutting Wheel or Torch
Welding Gloves
Welding Hood/Shield
Ear & Eye Protection
Sockets & Ratchet
Fire Extinguisher & Water

KIT CONTAINS

Over Axle Frame Section
M10 Hex Bolt
M10 Flanged Hex Nut

QTY

1
4
4



**RUST
BUSTER**
F R A M E W O R K S

RB7304L/R & RB7303
Chevy/GMC® 88-98 K1500/2500
Over Axle Frame Section

1) PREPARING YOUR VEHICLE

Begin by disconnecting your battery prior to starting your installation.

Inspect your vehicle for leaking fuel lines, fuel tank and engine components. If you have fuel leaks repair all leaks prior to starting your installation. If your fuel tank is near your welding area **remove your tank prior to welding.**

Remove all combustible items above the work area such as seats, carpets, padding, etc.

Keep all flammable materials away from the vehicle work area.

2) PREPARING YOUR WORKSTATION

Keep a fire extinguisher and water close by in the case of fire and make sure you always have a designated "Fire Watch" to assist during the cutting or welding phases.

Abide by all apprenticed welding safety standards and practices.

Always use appropriate welding eye protection, ear protection, and work and fire safety gloves during the installation and within the work area.



WARNING!

If you are unsure on how to perform the installation or how to operate any of the required tools listed above, it is **HIGHLY** advised that you enlist the work of a certified welder/installer.

Failure to follow proper safety precautions and instructions may result in serious injury. **The user assumes all liability when installing the product.**



RUST BUSTER

F R A M E W O R K S

RB7304L/R & RB7303 Chevy/GMC® 88-98 K1500/2500 Over Axle Frame Section

3) PREPARING FOR YOUR INSTALL

Remove your vehicle's bed. We show how to do this in a video over on our YouTube channel, www.YouTube.com/RustBusterFrameworks



Begin punching out the rivets retaining the rear spring hanger. Support the vehicle and lower the axle. Remove the rear crossmember bolt from the bottom of the rail.



Hold the part up to the frame and mark off its coverage.

4) CUT

Clean the frame free of rust and debris, revealing bare metal.



(OPTIONAL) Paint the part and work area with a weldable primer to help prevent against rust. By either referencing the opposite side by taking critical measurements (distances from frame holes, slots, etc.), or by using a flat, weld-safe section such as a plate or tubing, line up and clamp the mount into place, ensuring it is flush with the frame, and the body mount holes align.



RUST BUSTER

FRAMEWORKS

RB7304L/R & RB7303

Chevy/GMC® 88-98 K1500/2500 Over Axle Frame Section

5) WELD

With the included hardware and a 15mm socket and wrench, bolt the part to the frame to ensure proper alignment and weld spacing.

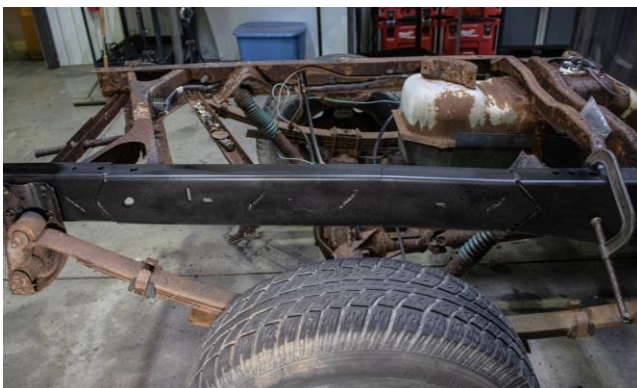


Remove any potential fire hazards from the work area. Tac weld the part to the frame. Following proper welding procedures, begin welding the part.

100% weld around all edges.



6) PAINT AND PROTECT



If you chose not to protect your part in (Step 4), coat the part and work area with a primer or other rust inhibitor to help prevent or reduce the risk of rust formation.

7) INSTALL/REINSTALL THE BUSHING

Lower the vehicle back down.



8) REINSTALL YOUR BED

