



RUST BUSTER

RB7082
Spare Tire Crossmember
2004-2008 Ford F-150 – Super Cab – 6.5' Bed



REQUIRED TOOLS

Jack Stands or Lift
Paint/Primer
Cutting Wheel or Torch
Welding Gloves
Welding Hood/Shield
Ear & Eye Protection
Sockets and Wrench
Fire Extinguisher
Hammer
Hole Punch

KIT CONTAINS

Spare Tire Crossmember
Frame Plates
M4 Hex Bolt

QTY

1
4
1



RUST BUSTER

RB7082

Spare Tire Crossmember

2004-2008 Ford F-150 – Super Cab – 6.5' Bed

1) PREPARING YOUR VEHICLE

Begin by disconnecting your battery prior to starting your installation.

Inspect your vehicle for leaking fuel lines, fuel tank and engine components. If you have fuel leaks repair all leaks prior to starting your installation. If your fuel tank is near your welding area **remove your tank prior to welding.**

Remove all combustible items above the work area such as seats, carpets, padding, etc.

Keep all flammable materials away from the vehicle work area.

2) PREPARING YOUR WORKSTATION

Keep a fire extinguisher close by in the case of fire and make sure you always have a designated "Fire Watch" to assist during the cutting or welding phases.

Abide by all apprenticed welding safety standards and practices.

Always use appropriate welding eye protection, ear protection, and work and fire safety gloves during the installation and within the work area.



WARNING!

If you are unsure on how to perform the installation or how to operate any of the required tools listed above, it is **HIGHLY** advised that you enlist the work of a certified welder/installer.

Failure to follow proper safety precautions and instructions may result in serious injury. **The user assumes all liability when installing the product.**



RUST BUSTER

RB7082

Spare Tire Crossmember

2004-2008 Ford F-150 – Super Cab – 6.5' Bed

3) **PREPARING FOR YOUR INSTALL**

Lift up your vehicle. Remove any lines or power harnesses from the work area. Disconnect and remove your spare tire.



Note: If you wish to retain your factory spare tire plate, you will need to carefully cut the welds retaining it to the crossmember. We offer part number **RB7085** if you wish to replace it.

4) **CUT**

Begin by removing the crossmember by cutting the welds on the inside and outside of the crossmember that retain it to the frame rails. You may need to cut the crossmember in half to make it easier to remove.



Clean and grind the work area free of rust and debris, revealing bare metal.





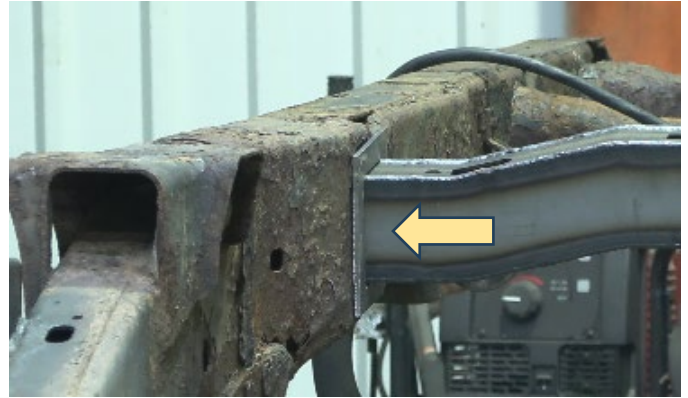
RUST BUSTER

RB7082

Spare Tire Crossmember

2004-2008 Ford F-150 – Super Cab – 6.5' Bed

Spray the work area with a weld through primer to help prevent against rust development.



Tac weld the plates into place before fully welding the inside and outside edges to the crossmember and frame rails.

5) INSTALL

Slide (1) frame plate onto each end of the crossmember, followed by inserting the crossmember into the frame's cut openings. Alternatively, you can cut two of the frame plates in half, and then reweld them together, to make the installation process easier.



If you retained your factory spare tire plate, using C-Clamps, close the gap between the crossmember and plate and weld it back together.



(Crossmember Orientation: See Front Page)

Slide the remaining frame plates onto each end of the crossmember, and push each plate up to each rail, closing off any excess openings. Measure the amount of crossmember sticking out of each rail, and ensure that it is centered.



RUST BUSTER

RB7082

Spare Tire Crossmember

2004-2008 Ford F-150 – Super Cab – 6.5' Bed

6) PAINT

Paint the part with primer or other rust inhibitor to help prevent or reduce the risk of rust formation.

We recommend our Rust Buster Rust Converter & Primer Spray Paint (RB9917).



Install the included M4 self tapping screw with the same wire that came from the shown location.

