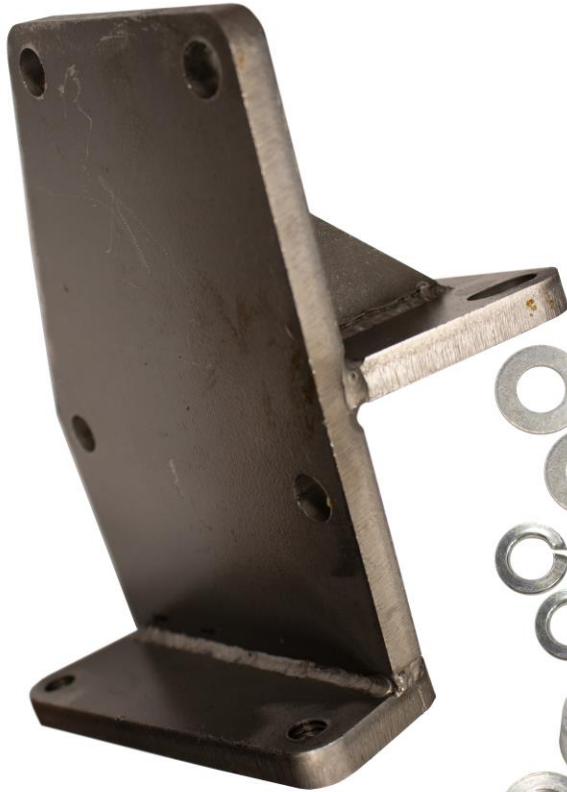


INSTALLATION INSTRUCTIONS

PART No.

FB26318

**Jeep CJ-5, 7, & 8/ 8 Scrambler
Steering Box Mount**



Drilling is required

REQUIRED TOOLS

- 5/8" Socket
- 5/8" Wrench
- Marker
- Drill
- 1/2" Drill Bit
- E14 Inverted Torx Bit

KIT CONTAINS

- Steering Box Mount
- 2" Shoulder Bolt
- 1.5" Hex Bolt
- 1" Hex Bolt
- Flat Washer
- Lock Washer
- Thick Spacer
- Thin Spacer

QTY

- 1
- 3
- 4
- 3
- 10
- 10
- 3
- 2

INSTALLATION INSTRUCTIONS

PART No.

FB26318

**Jeep CJ-5, 7, & 8/ 8 Scrambler
Steering Box Mount**

1) **PREPARE YOUR VEHICLE**

If applicable, remove your vehicle's plastic or metal frame cover to gain access to the top of the steering box frame rail.



Disconnect its pitman arm to allow the box to drop once its mount is removed.



2) **REMOVE THE STEERING GEAR BOX**

Begin by removing the bolts securing the box mount. With a 5/8" socket, remove the 3 bolts from the underside of the frame rail, followed by the two bolts on the top of the crossmember. You will either need to drop the box to the ground, or support it in place with a jack or the help of a friend.



Remove the mount from the box by removing the remaining two hex bolts with a 5/8" socket, followed by the two inverted torx bolts with an E14 inverted torx bit.



INSTALLATION INSTRUCTIONS

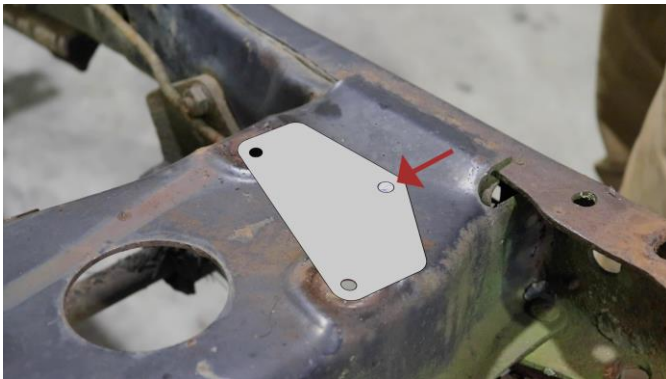
PART No.

FB26318

Jeep CJ-5, 7, & 8/ 8 Scrambler Steering Box Mount

3) MARK AND DRILL

The last page of these instructions comes with a drilling template. On the top of the front crossmember, line up the 2 bolt holes with the holes in the template, and mark the third hole to be drilled later.



With a 1/2" drill bit, drill out the marking.

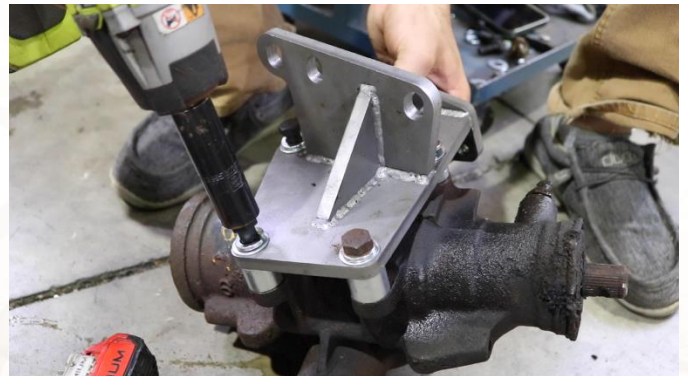


4) INSTALL THE MOUNT AND GEAR BOX

Depending on which vehicle you have, you will need to use a combination of the included spacers to level off the mount. Place the mount onto the box and determine which bolt hole requires a thick or thin spacer to ensure the mount sits level and flush.



Thick spacers will require a shoulder bolt and washers, while the thin spacer will require a large hex bolt and washers. Secure them with a 5/8" socket.



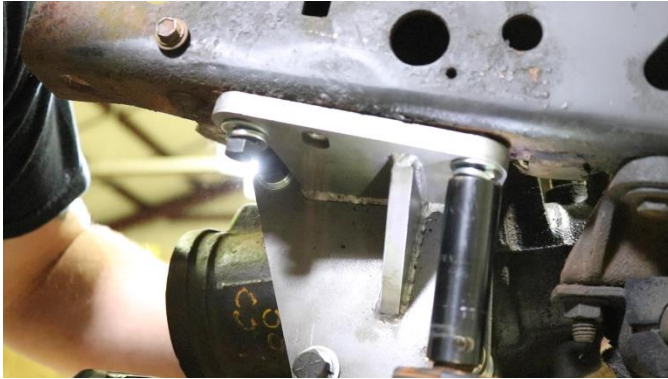
INSTALLATION INSTRUCTIONS

PART No.

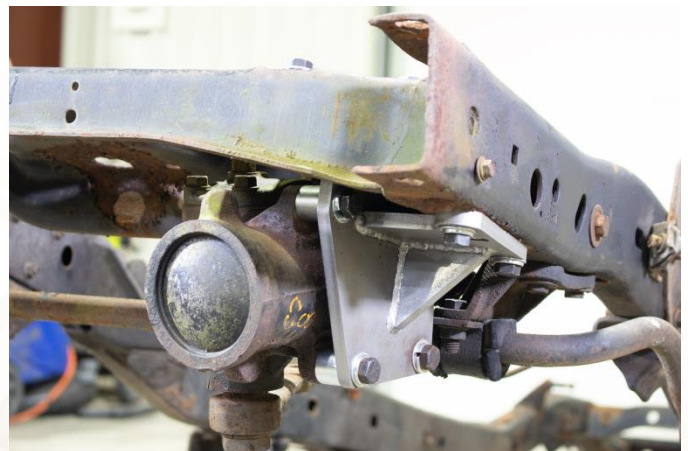
FB26318

**Jeep CJ-5, 7, & 8/ 8 Scrambler
Steering Box Mount**

With the help of a friend, secure the box back onto the frame rail. With the remaining 3 large hex bolts, secure the mount to the underside of the frame rail. With 3 of the smaller hex bolts, secure the mount to the front crossmember, now through the hole you drilled earlier, with a 5/8" socket.



NOTE: When reinstalling the hanger bracket, ensure the bracket sits in between the mount and the frame, and the remaining spacer is used with the rear most bolt to level out the plate.





INSTALLATION INSTRUCTIONS

PART No.

FB26318

**Jeep CJ-5, 7, & 8/ 8 Scrambler
Steering Box Mount**

**Place towards the
front of the vehicle**

