

Hot and Cold Side Intercooler Charge Pipe Kit

2017 – 2019 GM 6.6L Duramax L5P

(115026000/115026020/115026030)

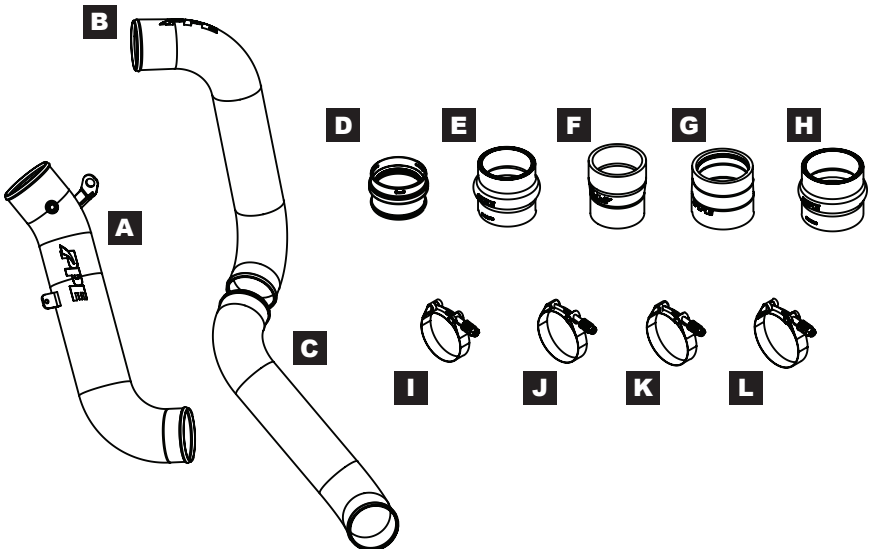
Installation Guide

CONTENTS:

- A** (1) INTERCOOLER PIPE – PASSENGER SIDE
- B** (1) INTERCOOLER PIPE – DRIVER SIDE UPPER
- C** (1) INTERCOOLER PIPE – DRIVER SIDE LOWER
- D** (1) ALUMINUM INTERCOOLER ADAPTER – CAC OUTLET
- E** (2) 3" HUMPED COUPLER
- F** (1) 3" TO 2.8" SILICONE COUPLER
- G** (1) 3.2" COUPLER WITH INNER RIB
- H** (1) 3.25" HUMPED COUPLER
- I** (1) CONSTANT TENSION CLAMP WITH SPRING, 76-84mm
- J** (5) CONSTANT TENSION CLAMP WITH SPRING, 79-87mm
- K** (1) CONSTANT TENSION CLAMP WITH SPRING, 81-89mm
- L** (3) CONSTANT TENSION CLAMP WITH SPRING, 86-94mm

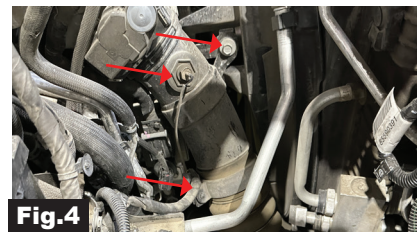
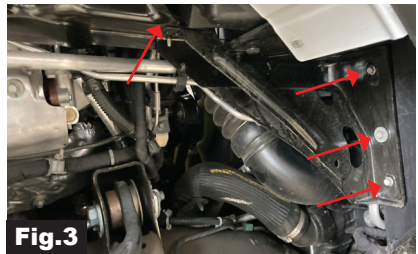
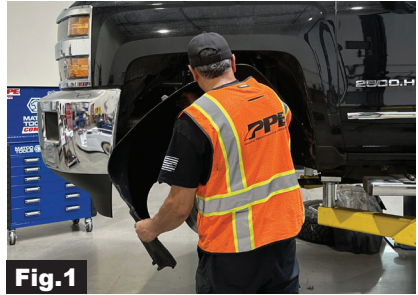
TOOLS REQUIRED:

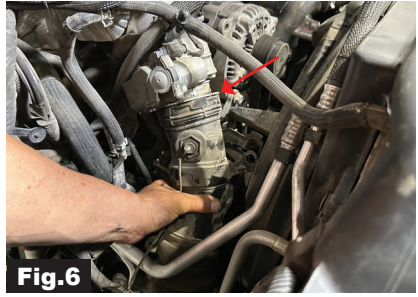
- Picks
- 8mm Socket/Wrench
- 10 mm Socket/Wrench
- 11 mm Socket/Wrench
- 13 mm Socket/Wrench
- 14 mm Socket/Wrench
- T15 Torx
- Silicone Lubricant



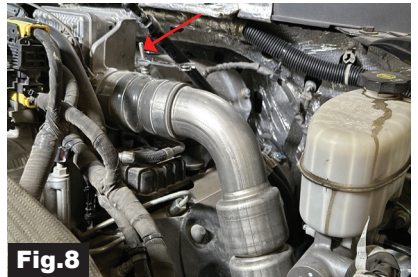
DISASSEMBLY:

1. Turn the vehicle off and allow time to cool down before installing.
2. Disconnect the negative battery terminal from both batteries.
3. Remove the driver's & passenger's side front wheels and wheel liners (Fig. 1).
4. Disconnect the sensor wiring harness then remove the air box (Fig. 2).
5. Remove both air cleaner tray and bracket from the vehicle (Fig. 3).
6. On the passenger side, disconnect the inlet temperature sensor, bolt, and the sensor connector clip (Fig. 4).
7. Disengage the retainer clip at the intercooler and twist to unlock the clip at the throttle body. Then remove the factory cold side charge pipe (Fig. 5 & 6).





8. On the driver side, loosen the hose clamp on the turbo and intercooler (Fig. 7 & 8).



9. Remove the factory hot side charge pipe from the bottom (Fig. 9).



Installation for PPE Cold Side Charge Pipe:

1. Remove the air temperature sensor from the factory cold side charge pipe and install it into the PPE Intercooler Pipe – Passenger Side **(A)** (**Fig. 10**).



Fig.10

2. Install 3.25" Hump Coupler **(H)** with Hose Clamps **(L)** onto the Aluminum Adapter **(D)** then install onto the intercooler (**Fig. 11 & 12**).

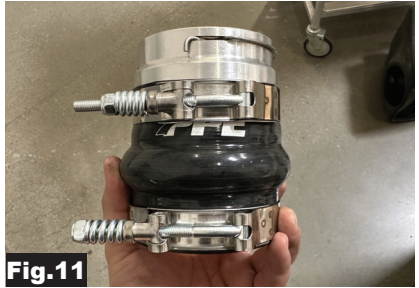


Fig.11

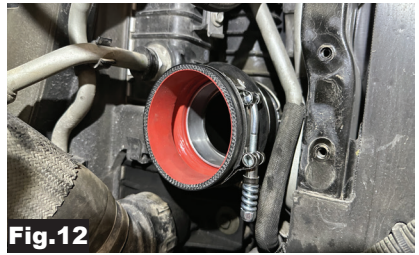


Fig.12

3. Install 3.2" Silicone Coupler with Inner Rib **(G)** with Hose Clamps **(K & L)** onto the throttle body (**Fig. 13**).

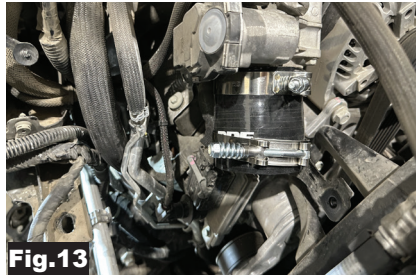
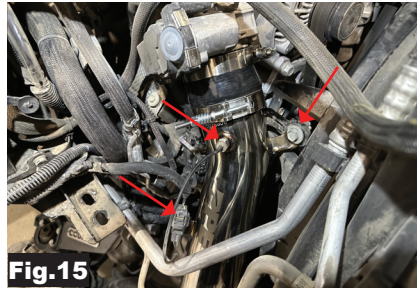


Fig.13

4. Install the PPE Intercooler Pipe – Passenger Side **(A)** on the throttle body side first then onto the intercooler side. Reinstall the bolt through the bracket on the intercooler pipe and reconnect all clips and sensors. Tighten all hose clamps **(Fig. 14 & 15)**.

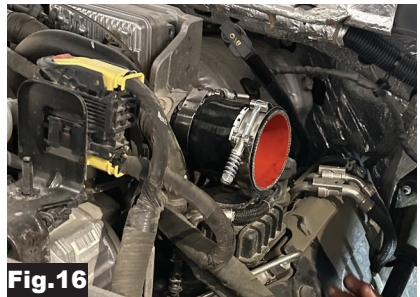


5. Reinstall the air cleaner tray and bracket and air box. Reinstall the passenger's side wheel liner and tire.



Installation for PPE Hot Side Charge Pipe:

1. Install 3" to 2.8" Silicone Coupler **(F)** and Hose Clamps **(M & N)** onto the turbo outlet and 3" Hump Coupler **(E)** and Hose Clamps **(J)** on the intercooler side **(Fig. 16 & 17)**.



Intercooler Charge Pipe Kit

2. Install the PPE Intercooler Pipe – Driver Side Lower (C) into the throttle body coupler by routing from the bottom (Fig. 18).



3. Install the 3" Hump Coupler (E) and Hose Clamps (J) on PPE Intercooler Pipe – Driver Side Lower (C). Install PPE Intercooler Pipe – Driver Side Upper (A). Tighten all loose hose clamps (Fig. 19 & 20).



4. Reinstall the driver's and passenger's side wheel and wheel liner.
5. Connect the negative battery terminal on both batteries.

Installation complete.

Place the supplied CARB E.O. label on a clean, visible location under the hood. PPE recommends using the top side of the fan shroud.

DISCLAIMER OF LIABILITY

Performance products can increase horsepower above and beyond factory specifications. Additional horsepower creates more stress on the drive-train components, which could result in drive-train failure.

Note regarding emissions-related, non-E.O.-legal products: THESE PRODUCTS ARE LEGAL IN CALIFORNIA ONLY FOR RACING VEHICLES THAT MAY NEVER BE USED, OR REGISTERED OR LICENSED FOR HIGHWAY OR OFF-ROAD USE.

This agreement sets forth the terms and conditions for the use of PPE products. The installation of this product indicates that the Buyer has read and understands this agreement and accepts the terms and conditions. PPE (Pacific Performance Engineering) Inc., its distributors, employees, and dealers (the "Seller") shall not be responsible for the product's proper use and service. The buyer hereby waives all liability claims. The Buyer hereby acknowledges no reliance on the Seller's skill or judgment to select or furnish goods suitable for any particular purpose and that there are no liabilities which extend beyond the description on the face hereof, and the Buyer hereby waives all remedies or liabilities expressed or implied, arising by law or otherwise (including without any obligation of the Seller with respect to fitness, merchantability and consequential damages), or whether or not occasioned by the Seller's negligence. The Seller disclaims any warranty and expressly disclaims any liability for personal injury or damages. The Buyer acknowledges and agrees that the disclaimer of any liability for personal injury is a material term for this agreement and the Buyer agrees to indemnify the Seller and to hold the Seller harmless from any claim related to the item of equipment purchased. Under no circumstances will the Seller be liable for any damages or expenses by reason of use or sale of any such equipment. The Seller assumes no liability regarding the improper installation or misapplication of its products. It is the installer's responsibility to check for proper installation and if in doubt, contact the manufacturer. The Buyer is solely responsible for all warranty issues from the manufacturer.

LIMITATION OF WARRANTY

The Seller gives Limited Warranty as to description, quality, merchantability, and fitness for a particular purpose, productiveness, or any other matter of Seller's product sold herewith. The Seller shall not be responsible for the products proper use and service and the Buyer hereby waives all rights other than those expressly written herein. This warranty shall not be extended, altered or varied except by a written instrument signed by Seller and Buyer.

Limited lifetime warranty on all PPE cast aluminum products, and PPE Transmission Coolers. Three (3) year limited warranty on PPE Manifolds and Up-Pipes Kits, and OEM-Length Up-Pipes. One (1) year limited warranty on all other PPE products from the date of sale to original buyer and limited solely to the parts contained within the products kit. All products that are in question of Warranty must be returned prepaid to the Seller and must be accompanied by a dated proof of purchase receipt. All Warranty claims are subject to approval by Seller. Under no circumstances will the Seller be liable for any labor charged or travel time incurred in diagnosis for defects, removal, or re-installation - of this product or any other contingent expenses. Under no circumstances will the Seller be liable for any damage or expenses incurred by reason of the use or sale of any such equipment. In the event that the buyer does not agree with this agreement: the buyer may promptly return this product, in a new and unused condition in its original packaging, with a dated proof of purchase to the place of purchase within ten (10) days from date of purchase for a full refund. The installation of this product indicates that the buyer has read and understands this agreement and accepts its terms and conditions.



PPEpower.com