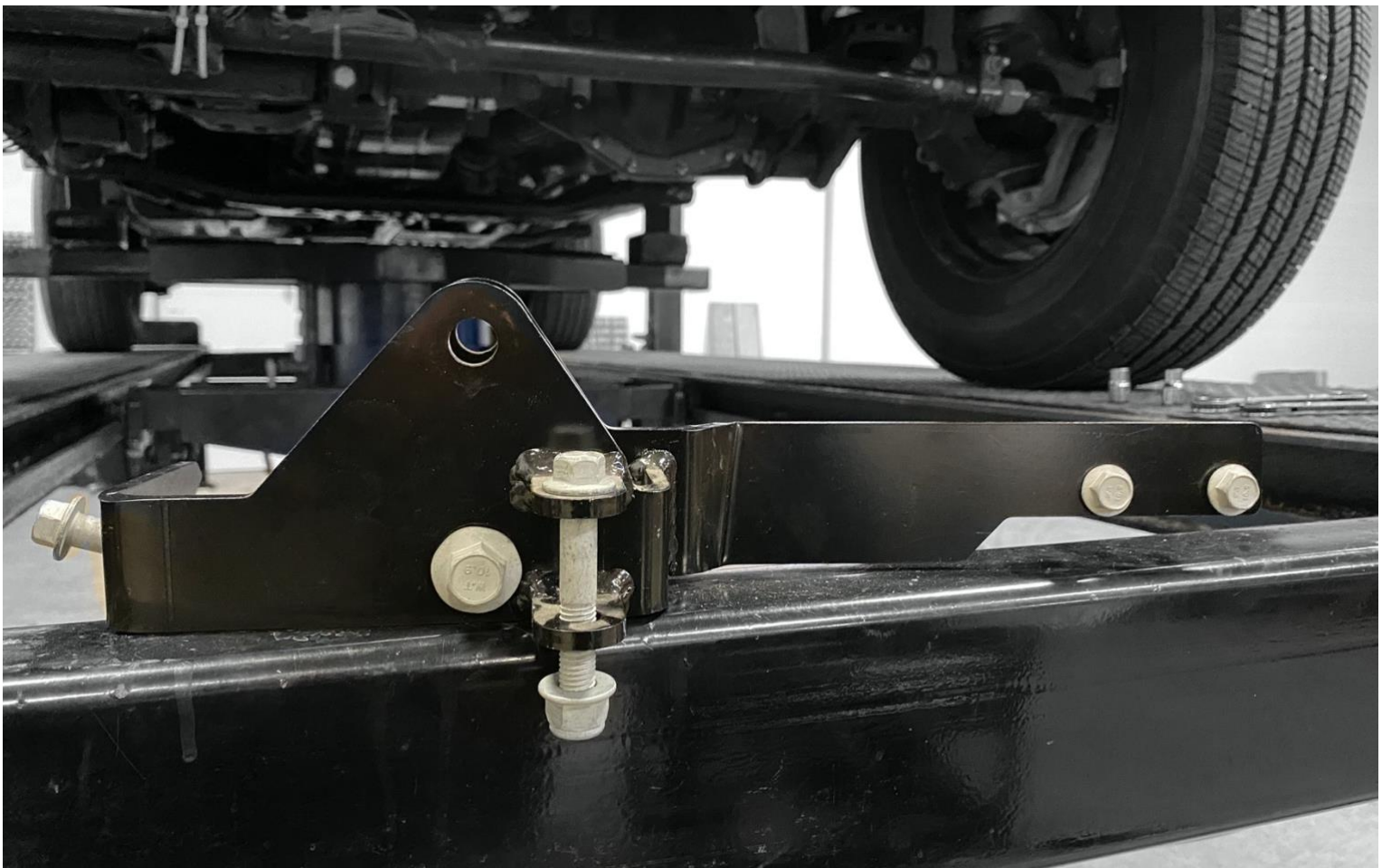


STEERSMARTS™

2018+ Jeep Wrangler JL
2019+ Jeep Gladiator JT

JL/JT Trackbar Relocation Bracket: 79029001





Tool List:

1. Ratchet
2. Ratchet Extension(s)
3. Sockets:
 - 1/2"
 - 17mm
 - 18mm
 - 19mm
 - 21mm
4. Wrench(s):
 - 1/2"
 - 15mm
 - 17mm
 - 18mm
 - 19mm
 - 21mm
5. Torque Wrench
6. **Optional** – Impact Gun

NOTE

If you are installing this piece, you need to have our YETI XD NO-DRILL Top-Mount draglink as well to keep linkage geometry parallel. Do not install this product with a stock location draglink. Install shown how relocation bracket attaches from a stock setup.

Installation Steps:

1. Remove passenger knuckle stabilizer bolt and nut.



2. Remove axle side stabilizer bolt and nut.



3. Remove Steering Stabilizer
4. Remove Axle Side Trackbar bolt and nut. ***Note – your axle will shift when you remove the bolt. It is easier to get the bolts out if you use a ratchet strap to keep the axle in place – it also makes setting up an adjustable trackbar easier



5. Loosen Axle Side Trackbar bolt and nut. **Note - If you are replacing the trackbar with an upgraded adjustable trackbar, at this point you will want to just remove the trackbar if you haven't already. Otherwise, once the axle side bolts have been loosened, use a bungee or rope or something to hold the trackbar out of the way until you go to reinstall it at the end.



6. Remove passenger side end link bolts. ***Note – you can likely remove your end links completely here as you will have longer ones that will have come with your lift if you're going top mount.



7. Remove stock stabilizer mount on axle



8. Lift the Steer Smarts Trackbar Relocation Bracket over the stock axle track bar mount



9. Place the round spacer in between the relocation bracket aligned with the lower hole and then slide the M14 bolt through and lightly snug the nut. ***Note – do not torque the bolt down at this point or you will struggle to get the trackbar to pass the mounting posts.





10. Take the 2x M10 bolts and start them into the holes on the axle that are closest to the driver's side.
***Note – do not torque these down yet.



11. Install passenger side sway bar end link ***Note – stock end link shown, but you will need to use the appropriate length based on your lift requirements.



12. Place trackbar in top hole of relocation bracket and install trackbar bolt and nut.



13. Now that the trackbar is in the bracket, you can now torque all of the bolts down to spec:

- Frame side trackbar bolt: 135 ft. lbs.
- Axle side trackbar bolt: 135 ft. lbs.
- Trackbar relocation bolts:
 - M10 Bolts: 40-45 ft. lbs.
 - M12 Sway bar Bolt: 85-90 ft. lbs.
 - M14 Bottom Bracket hole: 125-130 ft. lbs.

14. At this point if everything else is installed correctly, you can install the stabilizer of your choice and torque that down to the manufacturers specifications.

