

Griffin XD Bellow Seal Replacement Kit Installation Instructions:

1. Remove the draglink from the vehicle. Measure the length of the linkage from grease zerk to grease zerk so that it can be reset to this length when reassembling. Proceed to loosen the clamp nuts and removed the tube assembly with the damaged bellow seal from the draglink ends.
2. Remove the clamp bolt and nut using an M18 socket for the nut and a M15 wrench for the bolt as shown in Figure 1.



Figure 1: Bolt & Nut Removal

3. The clamp will need to be removed from the tube in order to remove the bellow seal therefore the clamp will need to spread open as shown in Figure 2. A metal cylindrical object (a deep well socket is used here) will need to be compressed into the V of the clamp using a vice or a press in order to force the clamp ears apart only enough until the tube can be slid out of the clamp (do not overspread clamp ears).
4. The next part to be removed is the constant tension band clamp as shown in Figure 3. Channel locks or pliers can be used to compress the ears of the constant tension band clamp; proceed to slide the clamp off of the end of the tube. Keep this band clamp as it will be used for the installation of the new bellow seal. Using a pair of snips or wire cutters, twist and break off the band clamp as shown in Figure 4.



Figure 2: Clamp Removal



Figure 3: Constant Tension Clamp Removal



Figure 4: Band Clamp Removal

- The assembly should now be free of hardware allowing the bellow seal to be pulled down the end of the tube and removed as shown in Figure 5 and Figure 6.



Figure 5: Bellow Seal Removal



Figure 6: Bellow Seal Removal

- Apply grease to the small end seal positioning groove shown in Figure 7. Slide the new bellow seal down the tube until the positioning ribs on the seal snap into the seal positioning grooves on the machined tube and barrel.

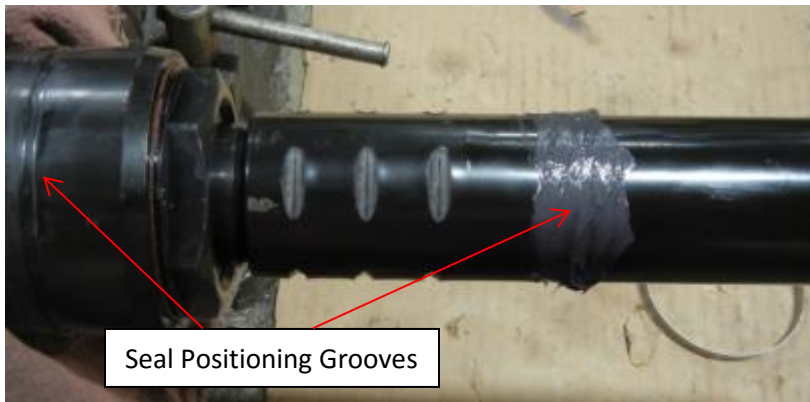


Figure 7: Grease Application for Seal Positioning Groove



Figure 8: Seal Assembly

- Slide the supplied band clamp over the bellow seal, and then position the clamp between the bottom lip and the positioning tabs of the bellow seal shown in Figure 9. Once the clamp is positioned appropriately; crimp the band clamp tab from both sides using a pair of snips as shown in Figure 10. This will pull the band tight and disallow the bellow seal to move from the positioning groove. Do not over crimp or under crimp the band clamp. Crimp the tab of the clamp until the bellow seal is no longer free to twist around the barrel and then stop as shown in Figure 11.



Figure 9: Band Clamp Positioning



Figure 10: Band Clamp Crimp



Figure 11: Band Clamp Crimp

- Next replace the constant tension band clamp that was removed in step 3 using a pair of channel locks or pliers as shown in Figure 12.



Figure 12: Constant Tension Band Clamp

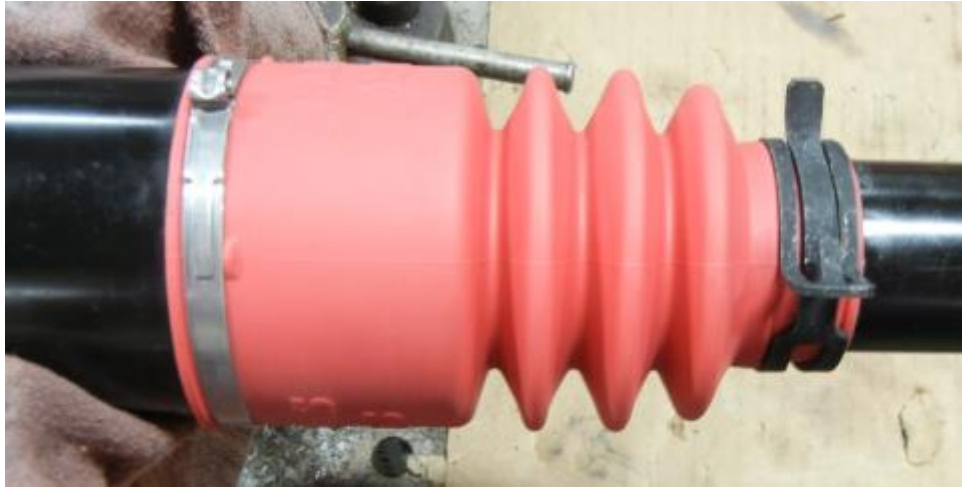


Figure 13: Completed Bellow Seal Assembly

9. Reassemble the clamp to the tube assembly which was removed in step 1 and 2. The clamp may need to be spread open again in a vice or press in order to insert the tube back inside the clamp. Loosely assemble the clamp nut and bolt and install the tube assembly back into the draglink. Reset the draglink to the length measured when it was removed from the vehicle as mentioned in step 1.
10. Reinstall the draglink onto the vehicle per the linkage installation instruction. Be sure to tighten all ball stud and clamp nuts to the torque specified in the linkage installation instruction. If another copy of the linkage installation instruction is needed it can be found at steersmarts.com under the installation instruction tab.