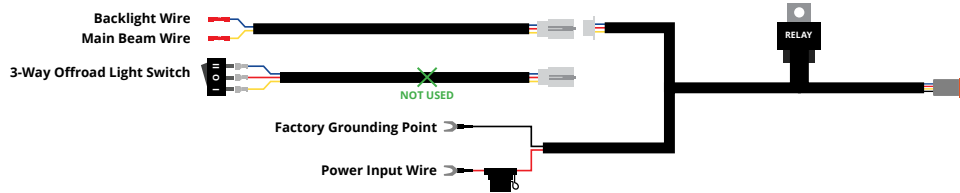


## Wiring Instructions

The following instructions are for Ford Raptors with an Auxiliary Switch Bank. If you do not have the Auxiliary Switch Bank, use the included toggle switch adapter wire to route a switch. All power sources must be fused.



18. Locate the auxiliary switch wiring near the battery. Access the owner's manual in the head unit and determine what wire color you will connect to based on the amperage rating. Since this harness draws main power directly from the battery, you can use any wire to supply a power signal. Connect the yellow wire for the main beam to an auxiliary switch wire. Using wire strippers, remove enough insulation to make a good connection. Insert the wire into the butt connector and crimp it to secure the connection.

19. Repeat this process for the blue backlight wire. The wire for the backlight can be connected to any of the other auxiliary switch wiring locations, like the back of the hood, or if you have a Stage Series backlit light already installed, you may choose to tap it into the same switch.

20. Connect positive and negative battery wires to the battery, or to main power terminals near the fuse box.

21. Secure the wires, test thoroughly, and tighten all hardware to complete your installation.

### NEED MORE HELP?

Scan the QR code to link to our installation video online!

We've taken the time to test our products on your vehicle. We can guarantee compatibility and fitment the first time – no guessing game! If you need more help with installation, watch our step-by-step video to walk you through the process.

YouTube



### This installation guide is for the following SKUs:

Ford Raptor 2017 SS5 CrossLink Grille Lightbar Kit, White Combo (DD7335 Sport, DD7337 Pro)  
 Ford Raptor 2017 SS5 CrossLink Grille Lightbar Kit, Yellow Combo (DD7336 Sport, DD7338 Pro)  
 Ford Raptor 2017 SS5 CrossLink Grille Lightbar Kit, White Driving (DD7339 Sport, DD7341 Pro)  
 Ford Raptor 2017 SS5 CrossLink Grille Lightbar Kit, Yellow Driving (DD7340 Sport, DD7342 Pro)  
 Ford Raptor 2017 SS5 Bumper LED Pod Kit, White Combo (DD7344 Sport, DD7348 Pro)  
 Ford Raptor 2017 SS5 Bumper LED Pod Kit, Yellow Combo (DD7345 Sport, DD7349 Pro)  
 Ford Raptor 2017 SS5 Bumper LED Pod Kit, White Driving (DD7346 Sport, DD7350 Pro)  
 Ford Raptor 2017 SS5 Bumper LED Pod Kit, Yellow Driving (DD7347 Sport, DD7351 Pro)

**STAGE**  
**SERIES**  
 RALLY-QUALIFIED LED LIGHTING

**Ford Raptor**  
**SS5 CrossLink Bumper/Grille Kit**



Thank you for your purchase of our new SS5 CrossLink Bumper/Grille Kit. CAD-designed to use existing mounting points, this kit is compatible with the 2017-2020 Ford Raptor. Installation instructions are included below.

COMPUTER DESIGNED  
**OEM FITMENT**



Please contact us if you have any questions.

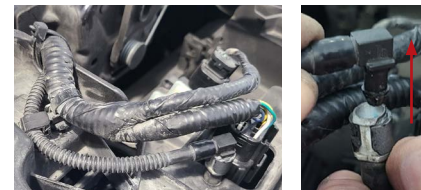
**Tools Needed:** Trim removal tool, ratchet, 10mm socket, 8mm socket, 13mm wrench, 10mm wrench, 4mm Allen key, 5mm Allen key,



1. With the hood popped, remove the trim panel in between the grille and the headlight. To do so, remove the clip from the top of the trim panel and then pull the trim panel away from the truck to remove it.



2. Using a plastic trim removal tool, remove the ten tree clips securing the plastic cover to the radiator core support.

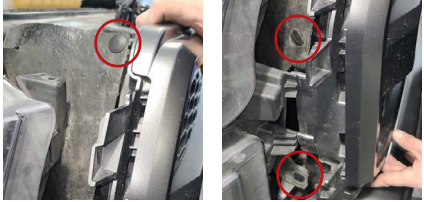


3. Using a plastic trim removal tool, disconnect the three connectors. While removing the washer line connector, push the quick disconnect ring out.

See inside for further instructions.



4. Using a 10mm socket, remove the four screws from the top of the grille as shown in the picture to the left.



5. Using a plastic trim removal tool, remove the three plastic clips on the side of the grille. Repeat this step on the other side of the vehicle.



6. Using a 8mm socket, remove the 8mm screw shown in the picture to the left. Repeat this step on the other side of the vehicle.

7. Remove the grille by lifting up and away from the vehicle so that the locating tab is out of the hole.



8. Using a 13mm wrench, loosen the two innermost 13mm bolts as shown in the picture to the left. Leave enough of a gap for the bracket to slide in.



9. Using a 13mm wrench, remove the two outermost bolts, as shown in the picture to the left. Replace these bolts with the provided M8 bolts and tighten them just enough to provide a gap for the bracket to slide in.

10. Install your new brackets, hand-tightening only.

11. Route the included wire harness between the bracket and the headlight trim, using the gap between the bumper and grille.

**NOTE:** Route the harness prior to installing the plastic valance as the connector will not fit through the opening.

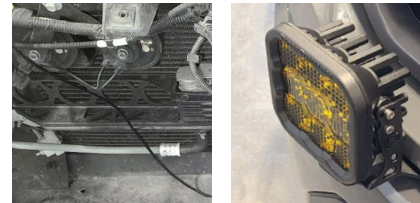


12. Adjust the bracket vertically so that there is at least a 2mm gap between the bracket and the bumper. Repeat this step on the other side of the vehicle.



13. Tighten down the brackets. Then reverse steps 1 through 7 to reinstall the grille and headlight trim panel.

**NOTE:** While reassembling the grille (step 7), be sure to push the clip, shown in the picture to the left, inboard for the grille to slide in.



14. If installing two pods, use the included universal mounting brackets and hardware to install directly onto the base brackets. Otherwise, continue to step 15.



15. If installing the 6-pod CrossLink lightbar, assemble your SS5 lightbar using the included CrossLink lightbar instructions.

**NOTE:** In order to achieve the correct curve, the SS5 lightbar should be secured to the bottom of the second notch on the link.



16. Mount the SS5 lightbar onto the low mount brackets using a 10mm bolt on each side. Rotate the lightbar to face the lenses up, exposing the end bolt in the pivot mount. Tighten the pivot mount bolt with a 5mm allen wrench and rotate the lightbar back down to install the other two 10mm bolts.



17. With all three 10mm bolts tightened down, adjust the gap on the opposite side pivot mount and secure the mount using the 5mm Allen wrench.

*See back for wiring instructions.*