

# DIODE DYNAMICS

PERFORMANCE LIGHTING TECHNOLOGY

## 2019+ Ford Ranger SS6 SAE/DOT LED Lightbar Kit Installation Guide



Thank you for your purchase of this custom-designed Stage Series LED Light Bar Kit for your 2019+ Ford Ranger! This kit utilizes both factory and included hardware to mount the bracket to the vehicle.

**Tools Needed:** Flat-head screwdriver or trim removal tool, 10mm and 13mm sockets



1. If applicable, remove the license plate holder. To do so, remove the two 10mm screws along the bottom of the holder. Then using a trim removal tool or flat-head screwdriver, pry up on the two mounting clips located on the top of the holder to remove it from the vehicle. Set it aside.



2. Using a trim removal tool or flat-head screwdriver, remove the five plastic push-rivets from along the top of the lower grille opening.

**NOTE:** The center push-rivet will be reused.

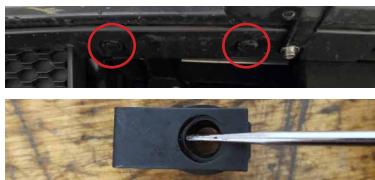


3. Route your wiring harness. We recommend routing the harness across the front of the engine bay and down the front passenger side corner to the lower grille area. This will require the core-support trim panel to be removed. It is held in place with four plastic push-rivets and two screws on the intake.

**NOTE:** We recommend routing the harness before installing the light bar, as it will be difficult to access the harness once the light is installed.

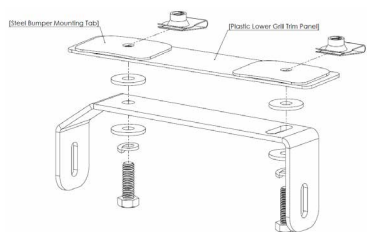
*See back for further instructions.*





4. Install the four included clip-on barrel nuts in the holes along the top of the lower grille where the push rivets were previously located.

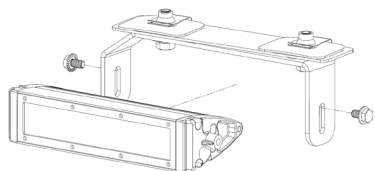
**NOTE:** The barrel nut retainer clips may need to be slightly bent outward to prevent damaging the paint during installation.



5. Using a 13mm socket and the included M8 bolts, washers, and lock washers, install your new light bar brackets as shown to the left.

**NOTE:** The side of the bracket with the curved mounting slot should be on the outermost side of the vehicle.

6. Connect your new 6" light bars to the wiring harness.



7. Using a 10mm wrench and the included hardware, install the light bars onto the brackets. Using the adjustment slots, adjust the height of the light bars, and adjust the brackets so that light is being directed where desired. Once adjustments are complete, tighten the 10mm and 13mm nuts.

8. Reinstall the lower grille and license plate holder (if applicable) using the original hardware. If applicable, confirm the adaptive cruise control and lane assist functions are operating properly to complete the installation.

Please contact **Diode Dynamics** should you have any questions about the installation or wiring process, at **314-205-3033** (10a-5p CST) or **contact@diodedynamics.com**.

## NEED MORE HELP?

Scan the QR code to link to our YouTube Channel!

We continuously bring in vehicles to our testing garage in order to create step-by-step videos to walk you through the installation process on your specific vehicle. Scan the QR code to see all our installation videos. Be sure to subscribe to our channel to stay up-to-date on the newest products and videos from Diode Dynamics!

YouTube



**This installation guide is for the following SKUs:**

**DD6591** Ranger 2019 S56 Bracket Kit  
**DD6592** Ranger 2019 S56 LED Kit White Driving  
**DD6593** Ranger 2019 S56 LED Kit White Wide

**DD6594** Ranger 2019 S56 LED Kit Amber Driving  
**DD6595** Ranger 2019 S56 LED Kit Amber Wide