



SYNERGY MFG. 870 INDUSTRIAL WAY, SAN LUIS OBISPO, CA (805) 242-0397

8012-03 – JK LCA SKID PLATE KIT

GENERAL NOTES:

- These instructions are also available on our website; www.synergymfg.com. Check the website before you begin for any updated instructions and additional photos for your reference.
- The Lower Control Arm (LCA) skid plates in this kit help to prevent the factory JK LCA brackets from bending.
- These skid plates can be installed with the axle still in the vehicle and control arms still attached.
- While not necessary, we do suggest removing the lower control arms to prevent any heat damage to the bushings/ joints.
- Be sure to disconnect the ground cable from the battery prior to welding as to prevent electrical damage to the vehicle.

PARTS LIST:

- (2) 801203 JK LCA SKID PLATES (1L & 1R)

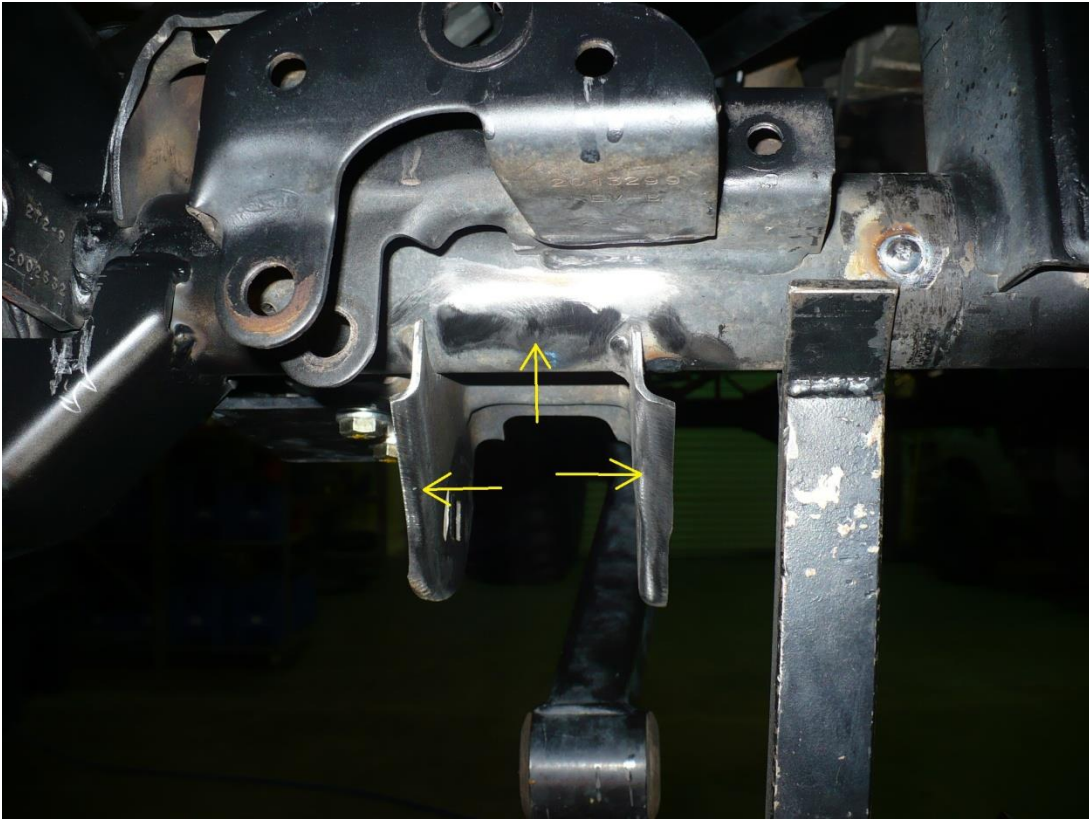
Parts / Tools Needed to complete installation:

- Basic simple hand tools.
- 4-1/2" angle grinder with abrasive attachments to remove paint and metal from axle and brackets.
- Some form of welder. Mig is preferred, but Tig or stick welding is acceptable.
- Spray paint of desired color

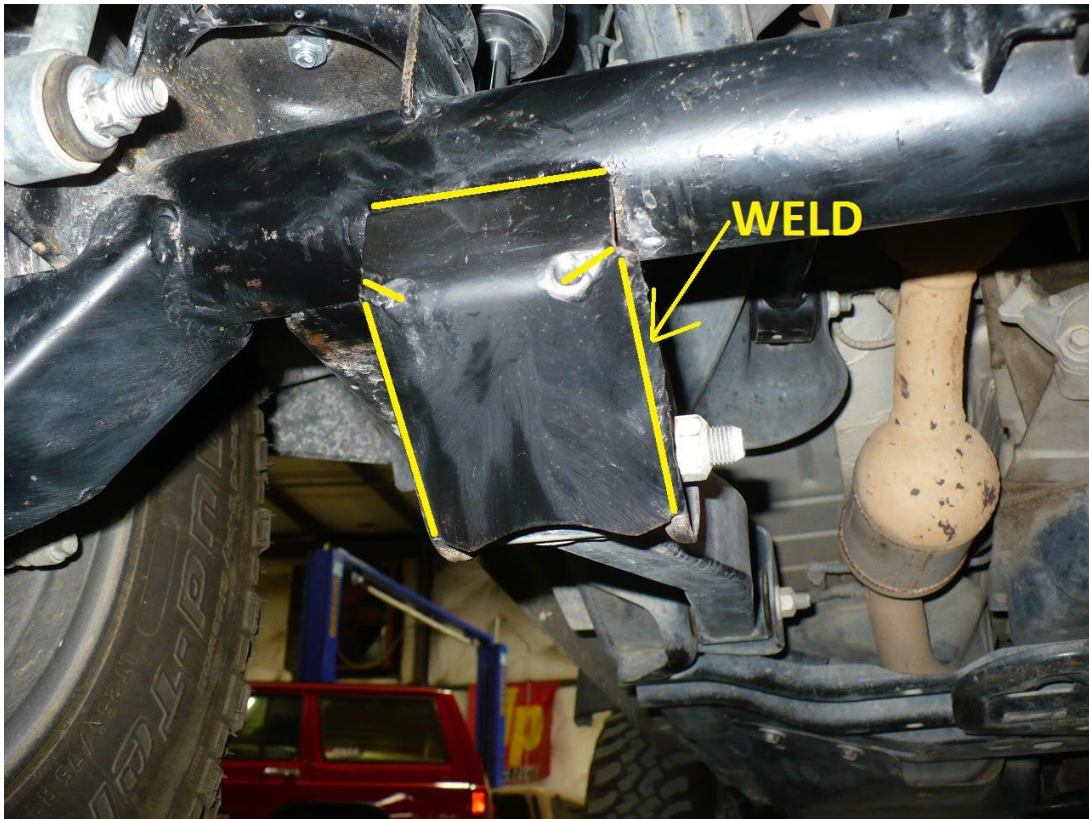
APPROXIMATE INSTALL TIME: 1-2 HOURS

INSTALLATION:

- 1) Install one side at a time.
- 2) It is recommended to remove the lower control arms from the axle. Excessive heat from welding can damage the bushings in the control arms. Use discretion when welding.
- 3) Fit the LCA skids on the axle to see what areas need to be cleaned up in preparation for welding.
- 4) Clean the areas to be welded as shown.



- 5) Once weld surfaces are prepared, place the LCA skids in position. Tack in several locations and fully weld all areas as shown below.



- 6) After welding, clean off any weld burrs and paint to the desired color to prevent corrosion.

Installation is Complete