



# TYGER®

## SKID PLATE

TG-SP6T80168

### BEFORE INSTALLATION

READ INSTRUCTIONS CAREFULLY BEFORE STARTING INSTALLATION. REMOVE CONTENTS FROM BOX AND VERIFY ALL PARTS ARE PRESENT. FAILURE TO IDENTIFY DAMAGE BEFORE INSTALLATION COULD LEAD TO A REJECTION OF ANY CLAIM. IF MISSING PARTS OR ANY DAMAGE FOUND, PLEASE TAKE A PICTURE FOR THE CLAIM PURPOSE. TO FILE YOUR CLAIM, PLEASE VISIT: [WWW.TYGERAUTO.COM/CONTACT](http://WWW.TYGERAUTO.COM/CONTACT)

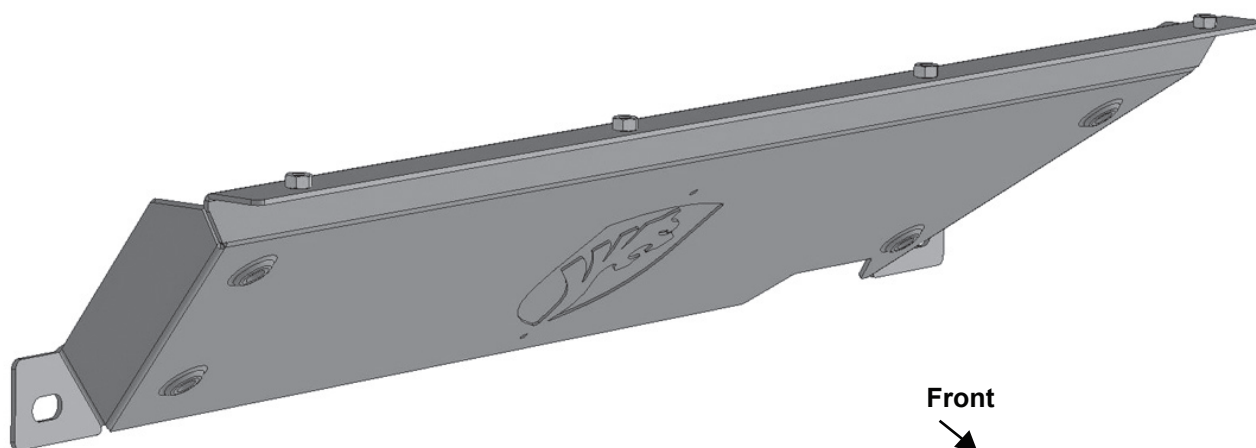
### TORQUE VALUES

Fastener Size	Class 8.8 Torque (ft-lbs)	Class 10.9 Torque (ft-lbs)
6mm	6-7	6-7
8mm	15-16	22-23
10mm	31-32	44-45
12mm	54-55	78-79
14mm	87-88	125-126

NOTE: Assistance is recommended.

### Parts List

- x1 Skid Plate
- x2 12-1.75mm x 120mm Hex Bolts
- x4 12mm x 32mm x 3mm Flat Washers
- x2 12mm Nylon Lock Nuts
- x4 8-1.25mm x 25mm Button Head Bolts
- x4 8mm x 24mm Flat Washers
- x4 8mm Lock Washers

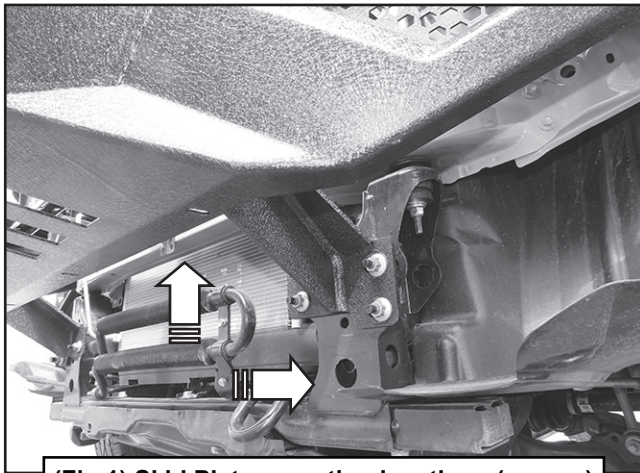




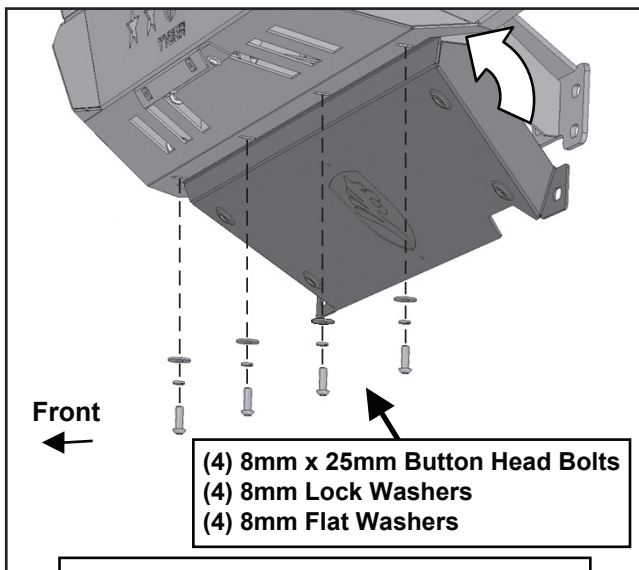
# TYGER®

## STEP 1

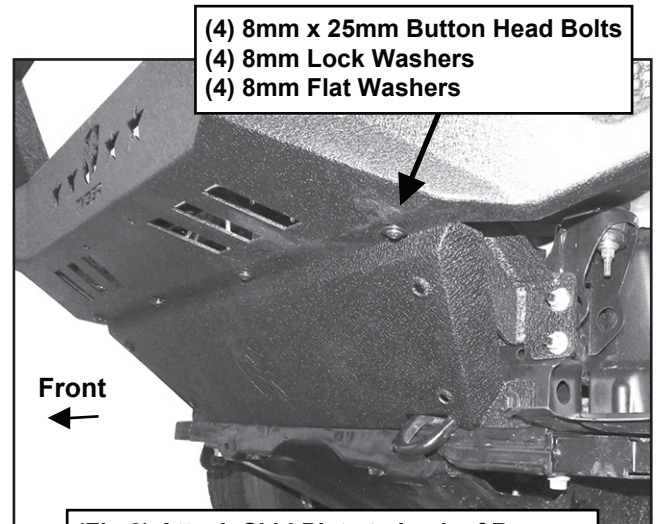
Carefully unwrap the Skid Plate. With assistance, line up the front of the Skid Plate with the back of the Bumper, (Fig 1). Attach the Skid Plate to the Bumper with the included (4) 8mm Button Head Bolts, (4) 8mm Lock Washers and (4) 8mm Flat Washers, (Figs 2-3). Leave hardware loose at this time



(Fig 1) Skid Plate mounting locations (arrows)



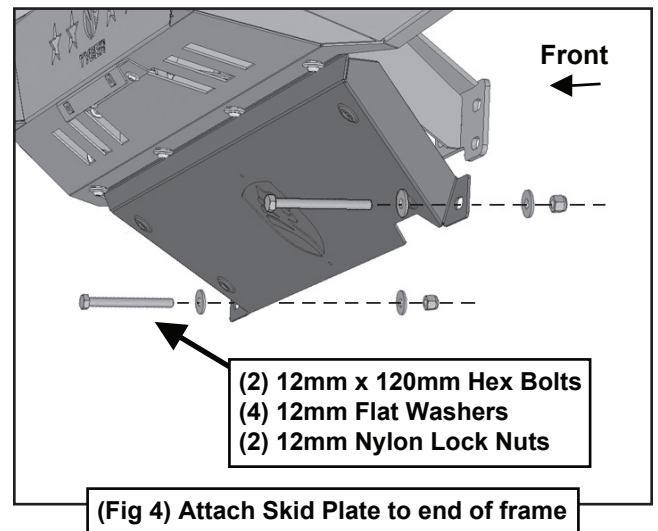
(Fig 2) Attach Skid Plate to back of Bumper



(Fig 3) Attach Skid Plate to back of Bumper

## STEP 2

Attach the mounting tabs on the Skid Plate to the large holes in the front of the frame with (2) 12mm x 120mm Hex Bolts, (4) 12mm Flat Washers and (2) 12mm Nylon Lock Nuts, (Figs 4-5).



(Fig 4) Attach Skid Plate to end of frame



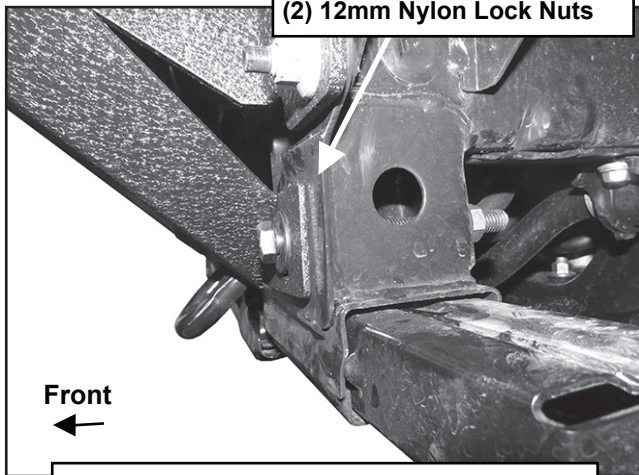
# TYGER®

## STEP 3

Level and adjust the Skid Plate and fully tighten all hardware.

**NOTE:** Do not overtighten lower hex bolts or damage to the frame may result, (Fig 5).

(2) 12mm x 120mm Hex Bolts  
(4) 12mm Flat Washers  
(2) 12mm Nylon Lock Nuts



(Fig 5) Driver/left mounting tab on Skid Plate attached to frame

## STEP 4

Do periodic inspections to the installation to make sure that all hardware is secure and tight.

