



SKID PLATE

TG-SP6C80468

BEFORE INSTALLATION

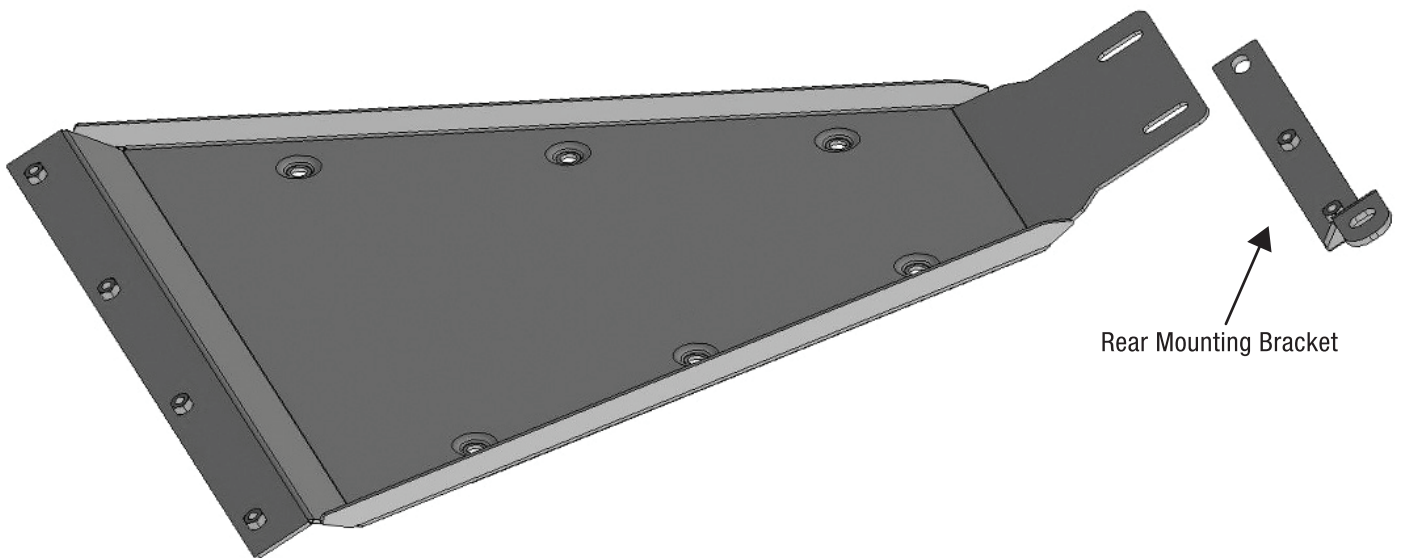
READ INSTRUCTIONS CAREFULLY BEFORE STARTING INSTALLATION. REMOVE CONTENTS FROM BOX AND VERIFY ALL PARTS ARE PRESENT. FAILURE TO IDENTIFY DAMAGE BEFORE INSTALLATION COULD LEAD TO A REJECTION OF ANY CLAIM. IF MISSING PARTS OR ANY DAMAGE FOUND, PLEASE TAKE A PICTURE FOR THE CLAIM PURPOSE. TO FILE YOUR CLAIM, PLEASE VISIT: WWW.TYGERAUTO.COM/CONTACT

TORQUE VALUES

Fastener Size	Class 8.8 Torque (ft-lbs)	Class 10.9 Torque (ft-lbs)
6mm	6-7	6-7
8mm	15-16	22-23
10mm	31-32	44-45
12mm	54-55	78-79
14mm	87-88	125-126

Parts List

- x1 TYGER Skid Plate
- x1 Mounting Bracket
- x6 8mm x 25mm Button Head Bolts
- x8 8mm x 24mm x 2mm Flat Washers
- x6 8mm Lock Washers
- x1 5mm Wrench





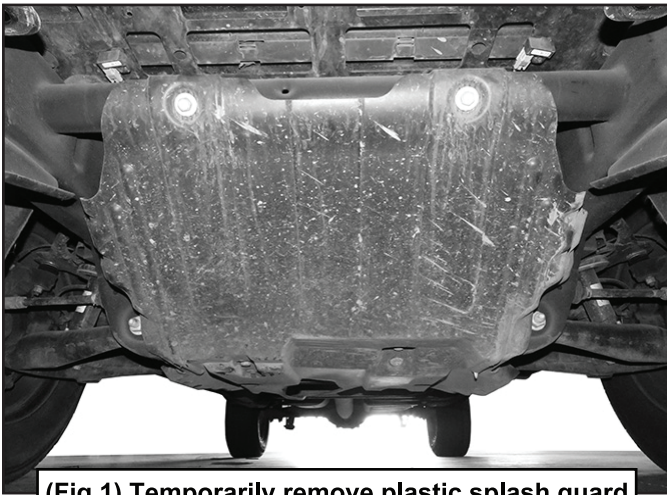
TYGER[®]

PROCEDURE:

REMOVE CONTENTS FROM BOX. VERIFY ALL PARTS ARE PRESENT. READ INSTRUCTIONS CAREFULLY BEFORE STARTING INSTALLATION. CUTTING IS REQUIRED.

STEP 1

From under the vehicle, locate and remove the factory plastic splash guard, (Figure 1).



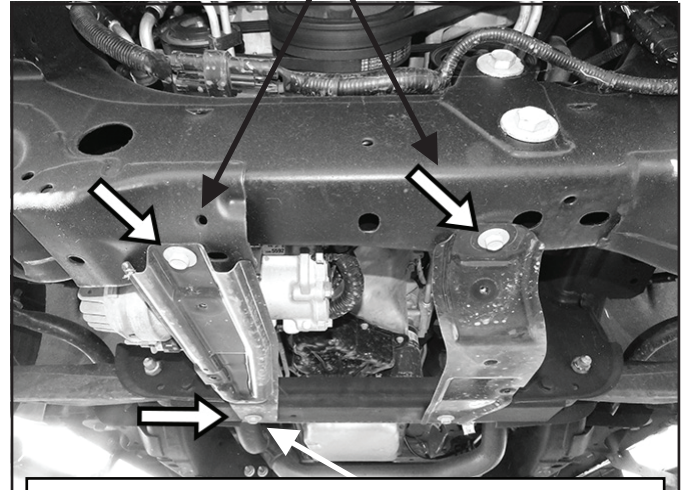
(Fig 1) Temporarily remove plastic splash guard

STEP 2

Starting at the driver side skid plate, remove only the forward hex bolt attaching the skid plate to the bottom of the crossmember, (Figure 2). On the passenger side skid plate, loosen the rear bolt and remove the forward bolt attaching the skid plate to the crossmember, (Figure 2).

NOTE: Hex bolts are also accessible with splash guard in place.

Remove the (2) hex bolts attaching the skid plates to the forward crossmember (arrows)

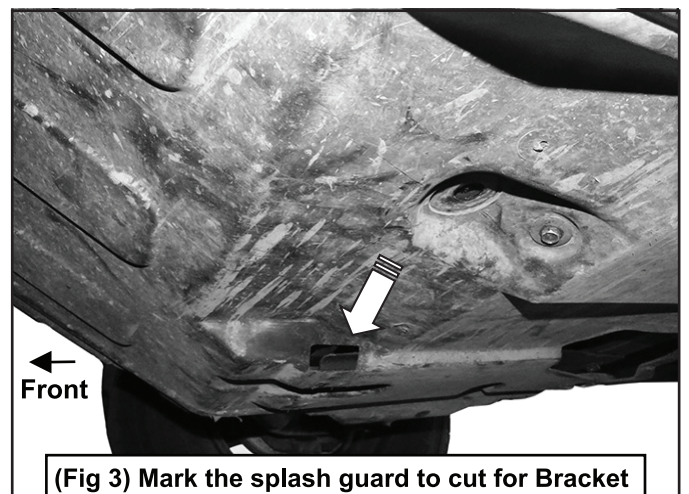


(Fig 2) Loosen the (1) hex bolt attaching the passenger side skid plate to the rear crossmember

STEP 3

Next, mark the location and cut an opening in the splash to insert the rear Mounting Bracket through the cover and between the skid plate and crossmember, (Figure 3).

NOTE: Factory splash guard must be cut to install the Skid Plate Bracket.



(Fig 3) Mark the splash guard to cut for Bracket clearance. Reinstall splash guard. Note: Insert flat passenger side of Bracket through slot and between skid plate and crossmember



TYGER®

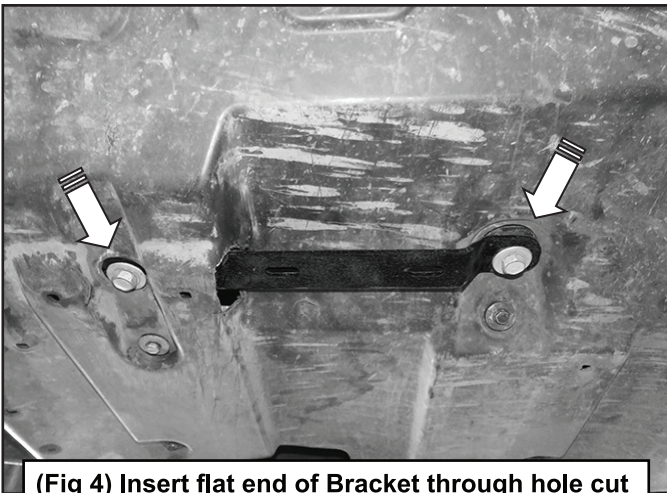
STEP 4

Reinstall the splash guard but leave all hardware loose, (Figure 3).

STEP 5

Insert the Rear Mounting Bracket through the opening in the splash guard. Slide the flat end of the Bracket between the skid plate and the crossmember, (Figure 4). Reuse the factory hex bolt to attach the Bracket. Line up the remaining bent end (driver side) with the threaded hole in the crossmember. Reuse the factory hex bolt to attach the Bracket to the splash guard, skid plate and crossmember, (Figure 4).

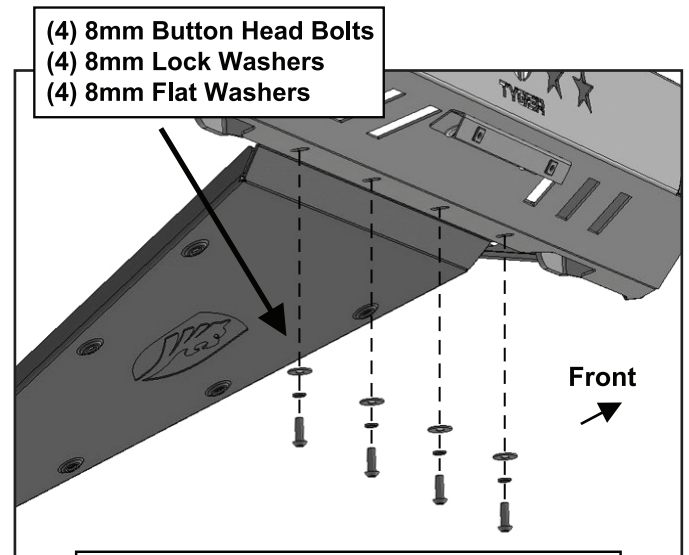
IMPORTANT: On the passenger side, the flat end of the Bracket will slide between the factory skid plate and the crossmember. On the driver side, the bent end of the Bracket will attach over the splash guard and factory steel skid plate.



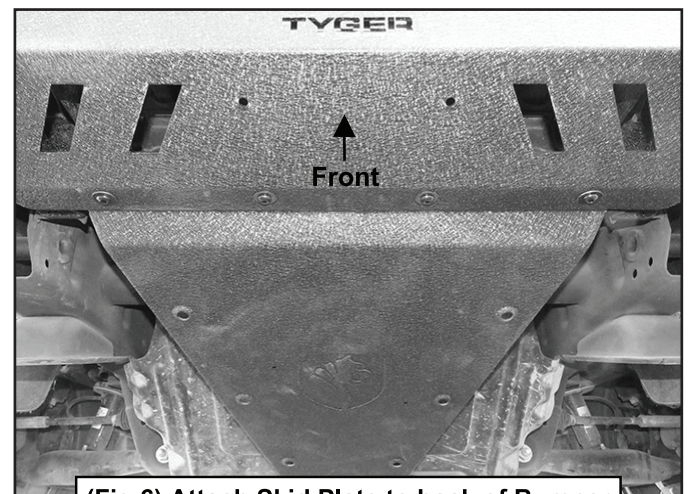
(Fig 4) Insert flat end of Bracket through hole cut in splash guard. Insert end of Bracket between steel skid plate and crossmember (behind splash guard). Reuse factory hex bolts (arrows) to attach Bracket

STEP 6

Carefully unwrap the Skid Plate. With assistance, line up the front of the Skid Plate with the back of the Bumper. Attach the Skid Plate to the Bumper with the included (4) 8mm Button Head Bolts, (4) 8mm Lock Washers and (4) 8mm Flat Washers, (Figures 5 & 6). Leave hardware loose at this time.



(Fig 5) Attach Skid Plate to back of Bumper

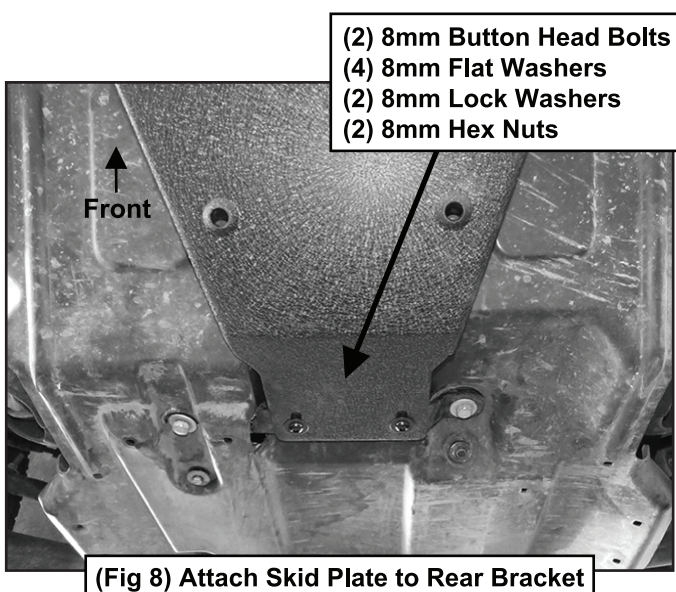
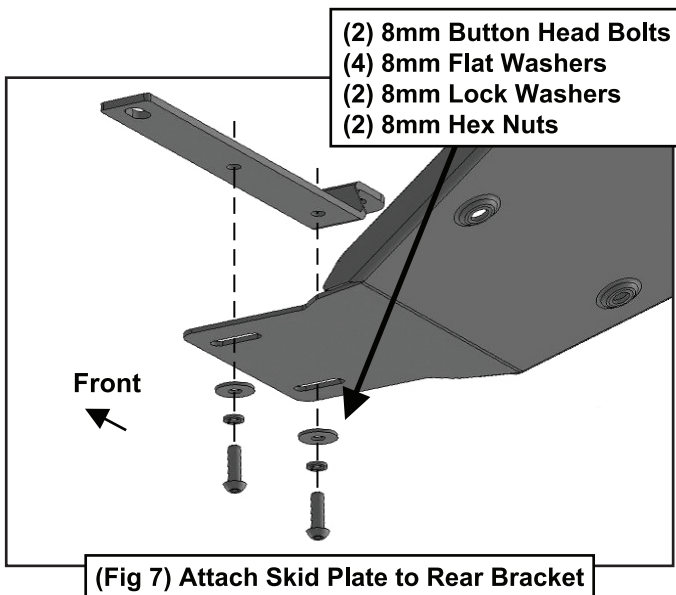


(Fig 6) Attach Skid Plate to back of Bumper



STEP 7

Attach the narrow tail end of the Skid Plate to the previously installed Mounting Bracket with the included (2) 8mm Button Head Bolts, (4) 8mm Flat Washers, (2) 8mm Lock Washers and (2) 8mm Hex Nuts, (Figures 7 & 8). Leave loose at this time.



STEP 8

Level and adjust the Skid Plate and fully tighten all hardware.

NOTE: Make sure to tighten the factory hex bolts attaching the factory steel skid plates to the vehicle, (see STEP 2, Fig 2).

STEP 9

Do periodic inspections to the installation to make sure that all hardware is secure and tight.