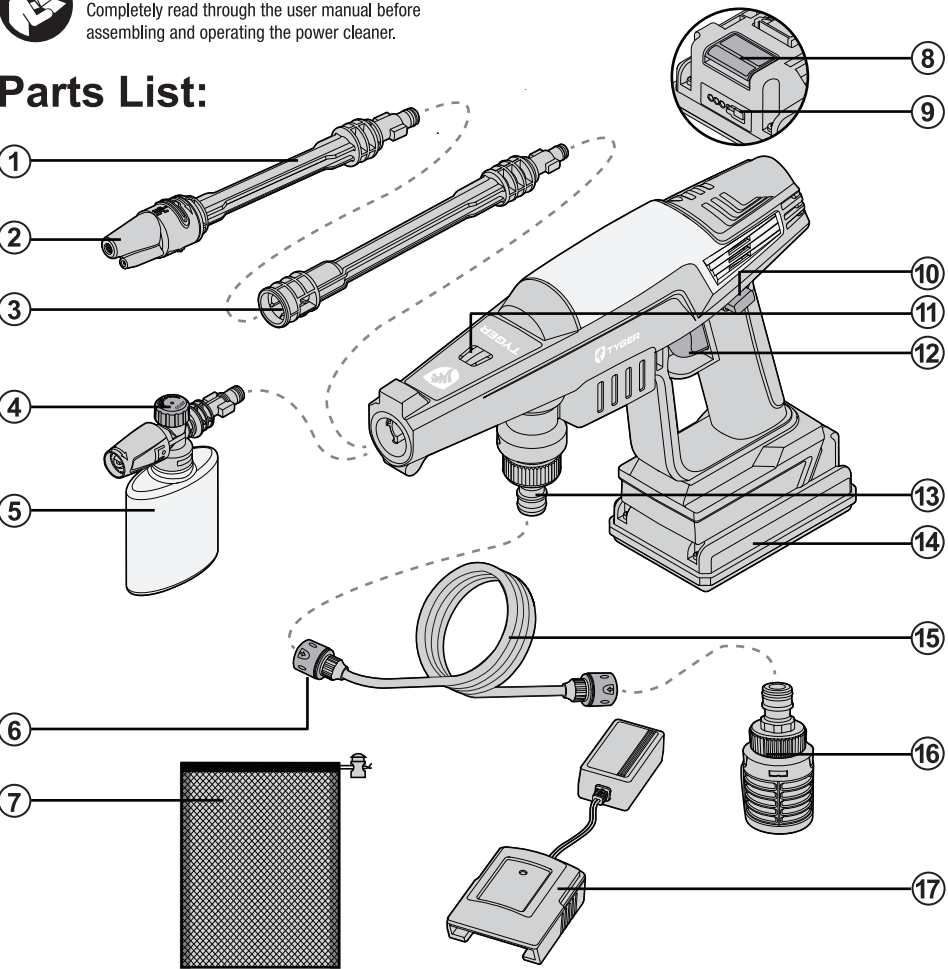




**TG-PW2C0360**  
CORDLESS PORTABLE POWER CLEANER  
[www.TygerAuto.com](http://www.TygerAuto.com)

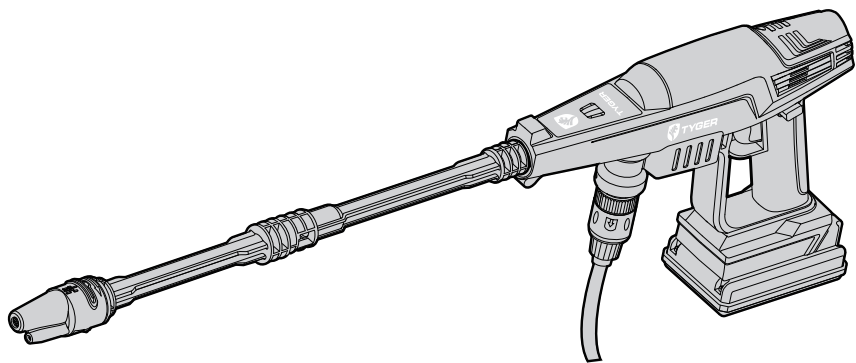
**WARNING:**  
Completely read through the user manual before assembling and operating the power cleaner.

**Parts List:**



- |                         |                                  |                                |                          |
|-------------------------|----------------------------------|--------------------------------|--------------------------|
| 1. Nozzle Barrel        | 6. Quick Connector-Plug          | 11. Pressure Adjustment Button | 16. Water Intake Filter  |
| 2. 3-in-1 Nozzle        | 7. Mesh Bag                      | 12. Trigger                    | 17. Battery Pack Charger |
| 3. Middle Barrel        | 8. Battery Release Button        | 13. Hose Connector Socket      |                          |
| 4. Foam Adjustment Dial | 9. Battery Life Indicator Button | 14. Battery Pack (SP-PW2001)   |                          |
| 5. Soap Bottle          | 10. Safety Lock                  | 15. Draw Hose                  |                          |

Page 1



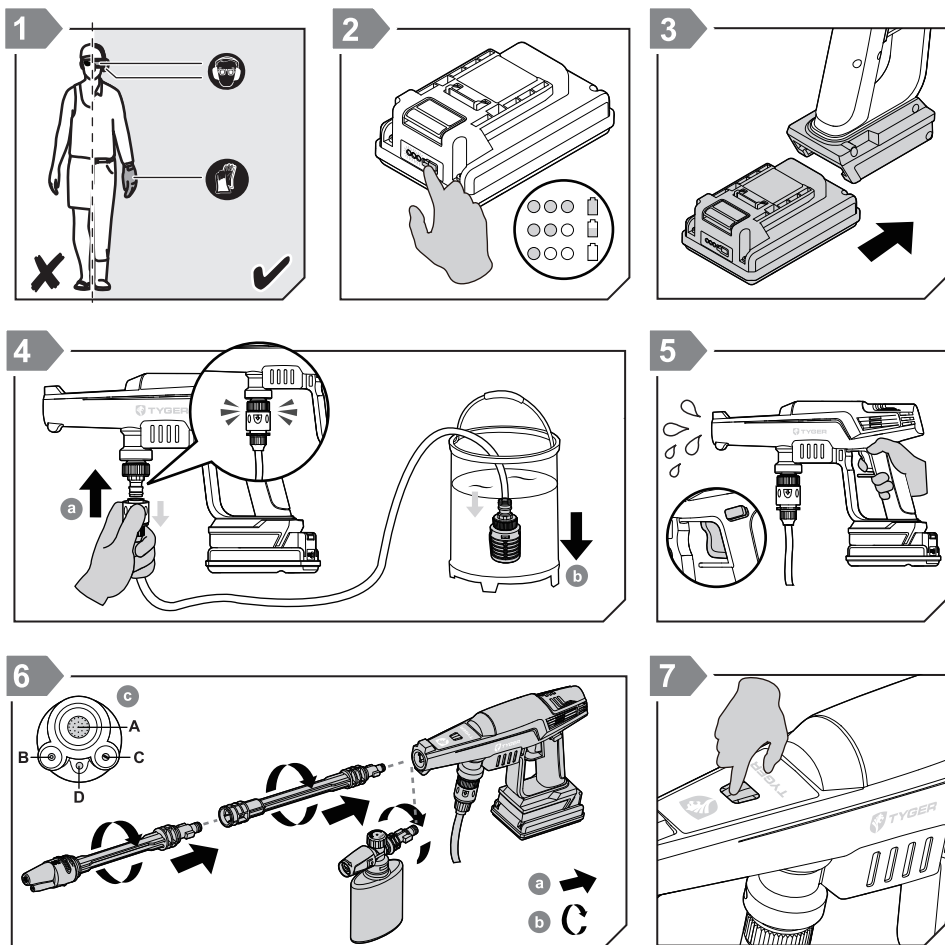
**NEED IMMEDIATE HELP ?**

**CONTACT US** [www.TygerAuto.com/Contact](http://www.TygerAuto.com/Contact)

**Please Call Customer Service: 1-866-340-3038**

**ASSEMBLY & OPERATIONS**

[www.TygerAuto.com](http://www.TygerAuto.com)



1. Wear protective eyewear, footwear and clothing.
2. Check battery life.
3. Load battery pack to cleaner.
4. **a** Pull down Red hoop on hose connector then insert head into cleaner for tight fit and release hoop to latch onto socket.  
**b** Place intake end into water source.
5. Press and hold safety lock first before pulling trigger. Allow up to **15 secs** to depressurize the draw hose.
6. **a** Insert the Middle/Nozzle Barrel or Soap Bottle Nozzle.  
**b** Fasten barrel and nozzle by turning counter-clockwise.  
**c** 3-in-1 multi-spray  
i) Wide Spray Nozzle  
ii) 0° Nozzle  
iii) 25° Nozzle  
iv) Pressure Release Valve  
**Note: When drawing water from a pressurized source , water will be discharged without pulling trigger.**
7. Hi-Low Pressure Button.

Page 2

**IMPORTANT SAFETY INSTRUCTIONS**

[www.TygerAuto.com](http://www.TygerAuto.com)

**SAVE THESE INSTRUCTIONS** for future reference.

**Safety Measures and Operating Reminders**

- DO NOT allow anyone who has not been trained or read this manual to operate the cleaner.
- DO NOT allow underaged individuals to operate the cleaner.
- Before operating cleaner, examine and identify any existing or potential defects.
- Cleaner operators and surrounding individuals must take proper safety precautions against splashing water and/or debris.
- During care and maintenance activities, battery pack MUST be detached from cleaner.

**Accessories and Spare Parts**

- To ensure safe operation, only use original manufacturer's or manufacturer approved spare parts and accessories.

**Physical and Mental Health**

- Cleaner should be operated by individuals in good physical and mental health.
- DO NOT operate the product when fatigued or under the influence of alcohol or drugs.

**Application**

- Cleaner is designed for domestic use. Proper usage includes the following:  
**Vehicles, motorcycles, inflatable boats, fishing boats, bicycles, patios, woodwork, brickwork, gardening tools.**
- Tyger Auto is not responsible for defects and damages as a result of improper use of the cleaner.
- Proper use also includes operating procedures and maintenance information mentioned in this manual.

**Gear and Attire**

- Protect yourself at all times while operating cleaner.
- Wear anti-slip footwear and protective eye/ear wear and clothing.



**Snow Foam Soap**

- Use only regular pH balanced soap appropriate for the surface you wish to clean.
- The cleaner is designed for use with the supplied cleaning agent or ones recommended by the manufacturer. The use of the other cleaning agents or chemicals may adversely affect the safety of the cleaner.

**Pre-check Cleaner**

- If any parts become damaged, DO NOT operate cleaner.
- Trigger resistance & feedback should feel natural. Releasing trigger should enable trigger to return to its original position.
  - Always keep barrel and main assembly in good shape and correctly assembled.

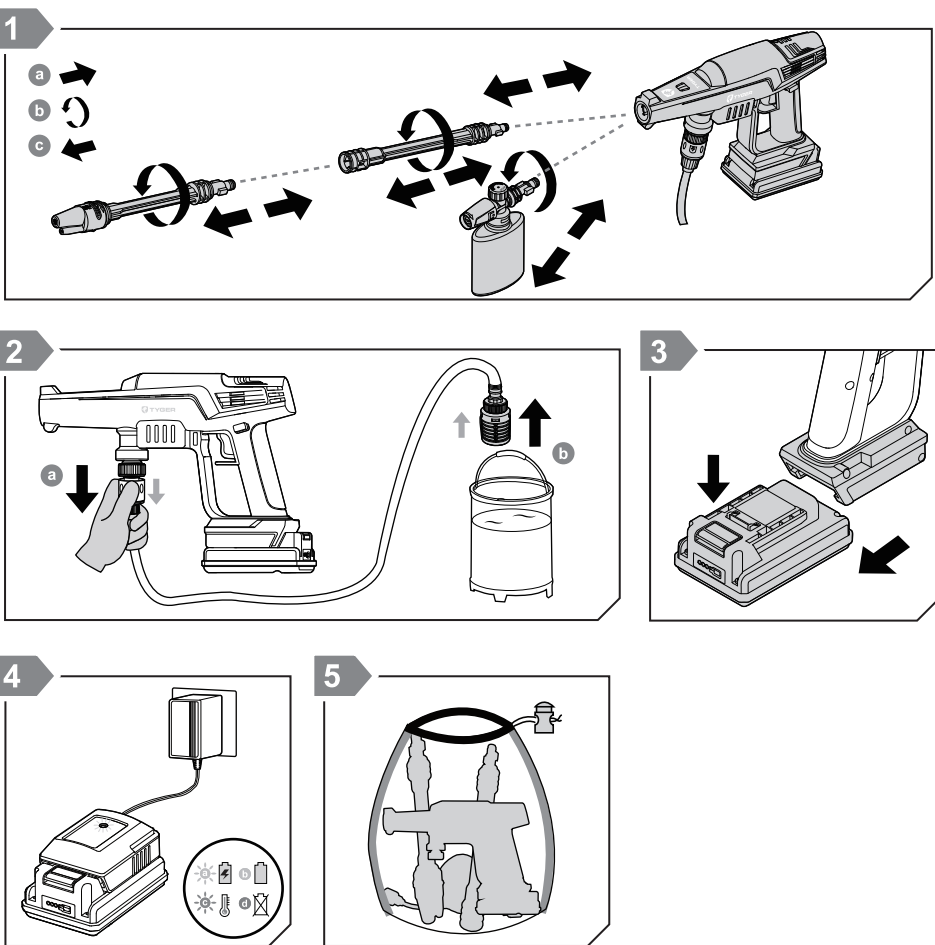
**During Operation**

- Dangerous** - DO NOT operate cleaner near inflammable or explosive material and machines.
- Dangerous** - DO NOT operate cleaner on surface that may contain asbestos.
- Dangerous** - DO NOT allow solvents (such as gasoline, paint thinner, acetone) drawn into cleaner from the water source
- Dangerous** - DO NOT point nozzle towards any individuals, pets, and other animals. DO NOT point nozzle towards any electrical device or clothing.

Page 4

**AFTER USE**

[www.TygerAuto.com](http://www.TygerAuto.com)



1. **a** Hold middle or nozzle barrel firmly and apply pressure into connector.  
**b** Turn barrel clockwise  
**c** Detach barrel
2. **a** Hold quick connector and pull down the Red hoop then unplug hose head from cleaner.  
**b** Retrieve Water Intake Filter end from water source.
3. Hold release button and slide Battery Pack off cleaner.
4. Plug in battery charger and place battery pack on it. LED indicates following:  
**(a) Green - flashing:** Charging normally.  
**(b) Green - fixed:** Charge complete.  
**(c) Red - flashing:** Battery temperature abnormal. Stop charging and disconnect charger from power immediately.  
**(d) Red - fixed:** Battery Pack failed to charge after 30min. Stop charging immediately.
5. Store cleaner and attachments into Mesh Bag.

Page 3

**IMPORTANT SAFETY INSTRUCTIONS**

[www.TygerAuto.com](http://www.TygerAuto.com)

**During Operation**

- Dangerous** - High-pressure jets can be dangerous if subject to misuse. The jet must not be directed at persons, live electrical equipment or the machine itself.
- Dangerous** - DO NOT direct the jet against yourself or others in order to clean clothes or foot-wear.

**Warning** - Avoid operating cleaner without a water source as it may damage the pump.

**Warning** - If cleaner is frozen, do not operate cleaner. Damage caused by freezing is not covered by warranty.

- Operate cleaner with both hands for proper control and mitigate effects of recoil.
- DO NOT store or operate cleaner in environments with poor ventilation.
- To reduce the risk of injury, close supervision is necessary when a product is used near children.
- Ensure that any exhaust emissions are not in the vicinity of air intakes.
- Stay alert- watch what you are doing.

**After Operation**

- Know how to stop the product and bleed pressure quickly. Be thoroughly familiar with the controls.
- Disconnect draw hose from cleaner.
- After use and prior to storage, completely discharge remaining water in cleaner and tubing.
- Detach battery pack.

**Battery Safety Guide**

- Read through the following instructions and then do the same with the separate instructions regarding battery and battery pack safety.
- Avoid using cleaner if battery pack surface gets hot.
- Improper use of battery pack will increase risk of fire or chemical burns. DO NOT: disassemble, short circuit, expose to temperature beyond 140°F.
- Keep safe away from children.
- Battery pack is a sealed device and safe to operate under normal circumstances. If fluid leaks from battery, do not come into contact with fluid and follow the following measures:
  - Skin contact will cause irritation. Use soap and water to rinse off.
  - Breathing in fume will cause sensitivity to your respiratory system. Seek clean air and medical attention.
  - Eyes coming in contact of fluid & fume will cause sensitivity. Immediately thoroughly rinse off your eyes for minimum of **15 minutes** and seek medical attention.
- Ensure battery is in a safe and dry environment and contact manufacturer support immediately.
- DO NOT soak battery pack in water. Stop using battery pack if it drops into water.
- Only use supplied dedicated battery charger to charge battery pack.
- AVOID having metal objects come in contact with both positive and negative terminal resulting in a short circuit.

**Battery Charger**

- Read through the following instructions and then do the same with the separate instructions regarding battery and battery pack safety.
- Battery charger can only be used to charge power cleaner's battery pack and nothing else.
- In order to extend battery life, do not immediately recharge battery pack until battery is allowed several minutes to cool down
- Battery charger can only be used indoors. Good air ventilation is required during charging.
- DO NOT reverse charge.
- Keep away from children or individuals with limitations.

Page 5

Recycling Battery Pack

- Disconnect battery pack from cleaner and/or charger
- DO NOT dispose battery pack with household waste. Follow your local authorities' guidelines on proper way to dispose.

Warranty Policy

Tyger Auto offers original purchaser a 1 year warranty on its Tyger Power Cleaner from manufacturer defects in materials, workmanship and finish under proper use. This warranty does not include damage resulting from product misuse, improper care including rusting, freezing, physical contact, product neglect, improper installation, product modifications, acts of God and any, but not limited to, scenarios described as improper use in this manual. The original purchaser must fill out the warranty claim form to file a warranty with us: <https://www.tygerauto.com/contact>



Maintenance and Repair

- Detach battery pack before maintenance, cleaner, and repair
- Any attempts to repair can only be performed under the guidance of the manufacturer and if necessary, with manufacturer approved spare parts.
- If cleaner cannot be started or stopped, exhibits shaking, fluctuating pressure, strange noise, unable to discharge water, etc., immediately disconnect battery pack and contact manufacturer for troubleshooting.
- Users modifying or altering cleaner on their own is strictly prohibited and will result in warranty being voided.
- To ensure applicable safety, use only original spare parts from the manufacturer or approved by the manufacturer.



Water Source Connections

- Cleaner is designed to draw water from unpressurized fresh water source (open water, lakers, water bucket, swimming pool).
- Make sure filter is clean and connected at all times.
- Maximum draw hose length is 16.4ft.
- Only use the supplied draw hose for cleaner. DO NOT attach old hose to cleaner.
- Make sure intake/filter is fully submerged in the water source.
- Make sure safety lock is pressed before applying trigger.
- Once trigger and pump are engaged, release safety lock.
- Allow up to 15 seconds for pipeline to pressurize.
- Water that has flowed through backflow preventers is considered to be non-potable.
- High-pressure hoses, fittings and couplings are important for the safety of the appliance. Use only hoses, fittings and couplings recommended by the manufacturer.



Intake Filter

- Intake mesh filter must be installed at all times to prevent debris from damaging pump.

Installing Barrels / Soap Bottle

- Barrel / Soap Bottle connectors use a keylock mechanism.
- Make sure the stoppers on plug end slide into the socket end completely.
- Turn barrel 90° counterclockwise and pull barrel / bottle to ensure tight fit.



Issue Experienced	Cause	Suggested Solution
No power starting up	Battery charge is low	Recharge Battery Pack
Power abruptly shut off	Cleaner is overheated	Cooldown cleaner before restarting
Battery pack won't charge	1. Battery pack not properly attached to charger 2. Charger disconnected from power	1. Ensure battery pack is properly attached to charger 2. Plug in and make sure power source is working properly
Charger LED: Red (flashing)	Charger is overheated	Cooldown charger before trying again
Charger LED: Red (fixed)	If LED is fixed red after 30min of charging. Battery pack has failed. Stop charging	Replace battery pack
Abnormally low volume of water discharged from nozzle	1. Filter has blockage 2. Tourniquet in hose 3. Impurities in the water 4. Nozzle has blockage	1. Clean out filter and hose 2. Straighten out or replace (if damaged) hose 3. Use clean water 4. Use supplied wiring to clear blockage



Issue Experienced	Cause	Suggested Solution
Unable to intake water	1. Hose/cleaner connector leaking air 2. Filter/hose connector leaking air 3. Filter unit not fully submerged in water	1. Reconnect and make sure Red hoop is latched onto the socket end 2. Reconnect and make sure Red hoop is latched onto the socket end 3. Readjust filter unit
Takes awhile for water to be discharged from nozzle	1. Hose is still pressurized with air pockets 2. Cleaner is set at 'low' pressure setting	1. Allow up to 15 sec for hose to be completely depressurized 2. Set pressure to 'high'
Barrel joints are leaking water	Barrels are not installed properly	Ensure both middle and nozzle barrels are installed and locked into place
Multi-spray nozzle is leaking water	1. Nozzle is not correctly set into one of the 3 modes 2. Cleaner is connected to pressurized water source	1. Ensure nozzle setting is correctly adjusted so the indicators are lined up with a clicking sound. 2. Disconnect from pressurized source and draw water from a non-pressurized fresh water source

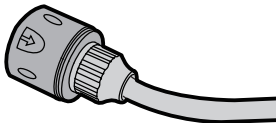
Filter

- Uninstall filter to clean monthly or as needed.
- If needed, use pliers to carefully remove mesh from filter for better cleaning.



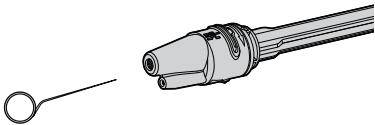
Hose Connector

- Rinse filter and hose connectors after use.



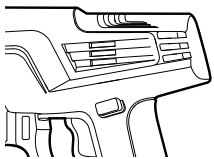
Nozzle

- Only clean nozzle when detached from cleaner.
- Blockage to nozzle will cause overpressurization and damage pump.
- Use provided needle to clear blockage or;
- Rinse water directly at nozzle.



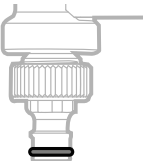
Air Intake

- Air intake should be kept clear to allow cool air to enter.



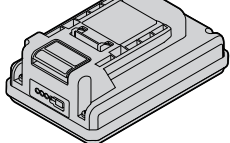
O-Ring

- Ensure tight seal in all connectors by preventing O-ring from drying. Apply lubricant as needed.



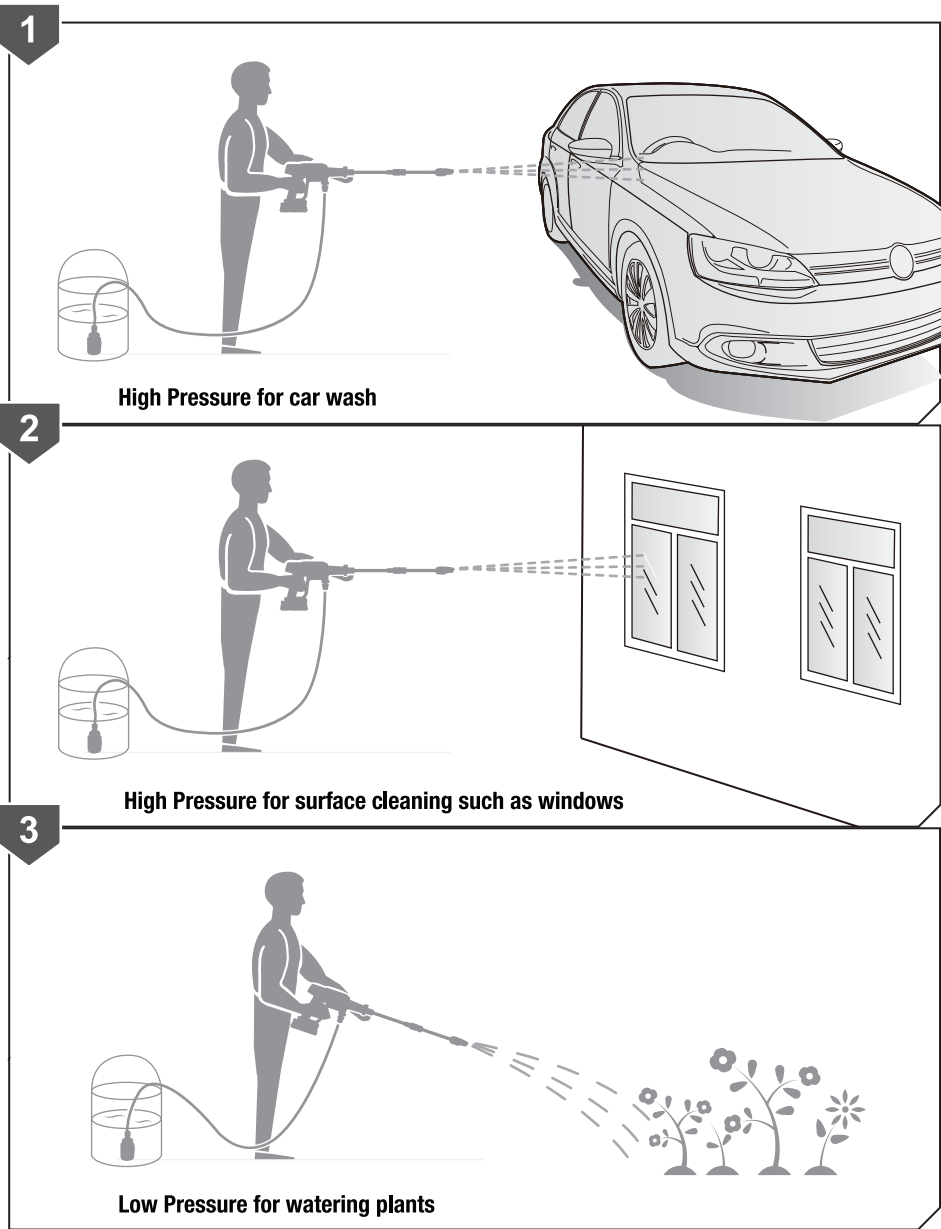
Battery Pack

- Beware of charge on battery pack. Recharge once battery charge is low. Long term loss of charge can cause battery to go dormant.



Storage

- Always store the pressure cleaner, parts, and accessories in a place that is inaccessible to children. The ideal storage temperature is between 50 °F and 86 °F. Store the cleaner indoors to prevent the water in the unit from expanding under freezing conditions.
- We recommend using the original package for storage or covering the product with a suitable cloth or enclosure to protect it against dust.



Technical Specifications	
Voltage	20V DC
Power	150W
Rated Pressure	360 PSI
Max. Pressure	536 PSI
Max. Inlet Pressure	101 PSI
Weight	8.4 lbs
Rated Flow	0.48 GPM
Max. Water Temp.	104°F/40°C
Battery Capacity	2000mAh
Charger Voltage	100-240V; 50/60Hz
Charger Current	400mA
Charge Time	~5h
Battery Life	15~40min