



# INSTALLATION INSTRUCTIONS

## A-PILLAR KIT FOR POLARIS

KIT PART #41652



KIT PART #41673



### TOOLS REQUIRED:

- 1/2" Socket or Wrench
- 18mm Socket and/or Wrench

### KIT INCLUDES:

- (2) Pod Lights
- (2) Mount Brackets
- (2) Mount Hardware Kits
- (2) A-Pillar Mounts
- (1) Wire Harness

### IMPORTANT

THANK YOU FOR PURCHASING RIGID INDUSTRIES' PRODUCTS FOR YOUR VEHICLE.

Please read through all of these Instructions and tips before proceeding with the installation.

We do our best to provide a simple installation process for all applications however a professional installation is always recommended.

Always disconnect any power sources connected to your vehicle before servicing fuses or electrical systems.

# RIGID<sup>®</sup> INSTALLATION INSTRUCTIONS

## NOTE:

1. This kit fits Polaris Razor Turbo R and Polaris Pro R.
2. Revolve lights are designed to operate from 9V-36V only. Using Revolve products on a 32V or higher system will cause permanent damage to electrical components.
3. Back lighting and forward projecting LED's are intended for off-road use only.

## KIT DIAGAM:

A: Rigid Revolve Pod Light  
B: A-Pillar Bracket



or

A: Rigid 360-Series Pod Light  
B: A-Pillar Bracket



## BRACKET LAYOUT:



FRONT OF VEHICLE

# **RIGID** INSTALLATION INSTRUCTIONS

## MOUNTING INSTRUCTIONS

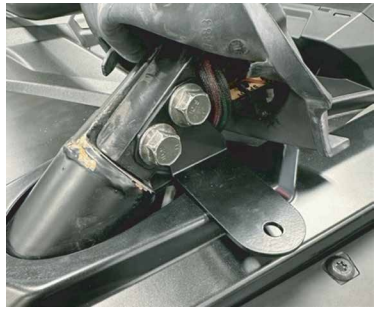
### **STEP: 1**

Lift the Rubber boot at the lower A-pillar section of the roll cage. This will reveal the bolts and mount locations. If your vehicle is equipped with tweeters you may need to disconnect them. Loosen and remove the two bolts using the 18mm socket and wrench. Be sure to do this one side at a time.



### **STEP: 2**

Attach the bracket and re-tighten the bolts. Be sure the bracket sits like what is pictured.



### **STEP: 3**

Attach Pod light with the shorter carriage bolt using a 1/2" socket or wrench. Slide the rubber boot back down over the bolts. Install is complete.



## WIRING INSTRUCTIONS



RED WIRE = PROJECTING TRIGGER  
 BLACK WIRE = GROUND  
 WHITE WIRE = BACK LIGHTING TRIGGER  
**IMPORTANT**

Always disconnect the vehicle battery terminals before servicing the electrical system

### STEP: 1

Match the light pigtail to the harness colors: Red to Red (Forward projecting LED +12v trigger), White to White (back-lighting LED +12v trigger), and Black to Black (shared ground).

### STEP: 2

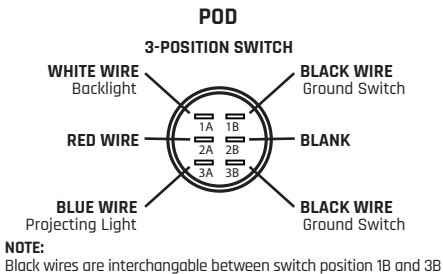
Use butt connectors with appropriate wire AWG.

### STEP: 3

Find a desired location for switches and drill a 3/4" hole for each switch.

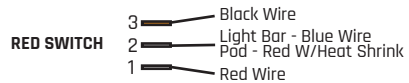
### STEP: 4

Connect leads from wire harness to switch using the following diagrams:



### BAR

#### FORWARD PROJECTING LED'S



#### BACK-LIGHTING LED'S



### STEP: 5

Route main power and ground leads from the harness to the battery terminals and attach the RED lead to battery +12v and the BLACK lead directly to the battery ground.

### STEP: 6

Reconnect the negative battery terminal and turn switches on to verify lights are functional.

**Wiring:** Wire your lights according to the instructions included with the light. Take care to avoid any heat sources and sharp or abrasive surfaces.

Your installation is now complete.  
**Welcome to the Rigid Nation!**

### WARRANTY INFORMATION

For warranty information, visit [www.rigidindustries.com/about/warranty](http://www.rigidindustries.com/about/warranty) 779 N Colorado St, Gilbert, AZ 85233 • 855-760-5337  
[www.rigidindustries.com](http://www.rigidindustries.com)

RIGID, Revolve and Rigid Industries are registered and/or common law marks owned by JST Performance, LLC, a Delaware limited liability company d/b/a Rigid Industries.