

# ROUGH COUNTRY

## SUSPENSION SYSTEMS®

### Rough Country Storage Box

**Thank you for choosing Rough Country for all your vehicle needs.**

Please read instructions before beginning installation. Check the kit hardware against the kit contents shown below. Be sure you have all needed parts and know where they go.

If question exist, please call us @1-800-222-7023. We will be happy to answer any questions concerning this product.

Check all fasteners for proper torque. Check to ensure for adequate clearance between all components.

Periodically check all hardware for tightness.

**NOTE: Jeep JLU used for installation reference purposes but also can be installed in other applications as long as space allows.**

#### KIT CONTENTS:

Lockable Storage Box x 1  
Rubber Mat x 1  
Key Set x 2

#### TOOLS NEEDED:

13mm Wrench or Socket

#### HARDWARE INCLUDED:

8mm x 55mm Hex Head Bolts x 4  
8mm Flat Washers x 8  
8mm Lock Washers x 4  
8mm Nuts x 4  
Aluminum Puck Spacers x 4



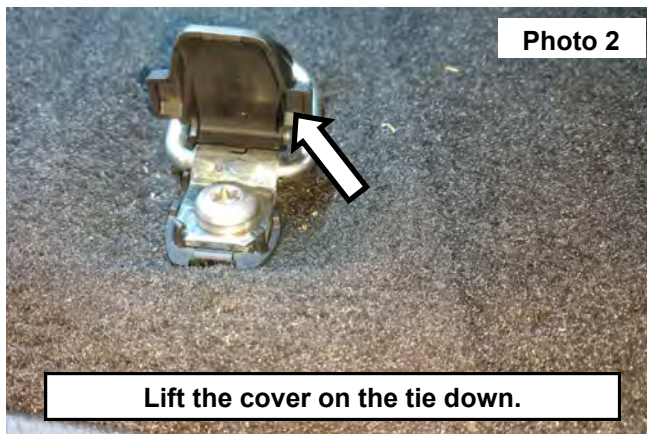
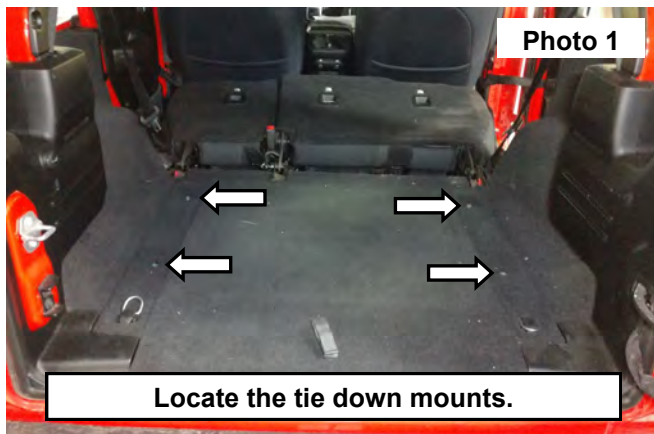
#### Torque Specs:

Size	Grade 5	Grade 8	Size	Class 8.8	Class 10.9
5/16"	15 ft/lbs	20ft/lbs	6MM	5ft/lbs	9ft/lbs
3/8"	30 ft/lbs	35ft/lbs	8MM	18ft/lbs	23ft/lbs
7/16"	45 ft/lbs	60ft/lbs	10MM	32ft/lbs	45ft/lbs
1/2"	65 ft/lbs	90ft/lbs	12MM	55ft/lbs	75ft/lbs
9/16"	95 ft/lbs	130ft/lbs	14MM	85ft/lbs	120ft/lbs
5/8"	135ft/lbs	175ft/lbs	16MM	130ft/lbs	165ft/lbs
3/4"	185ft/lbs	280ft/lbs	18MM	170ft/lbs	240ft/lbs

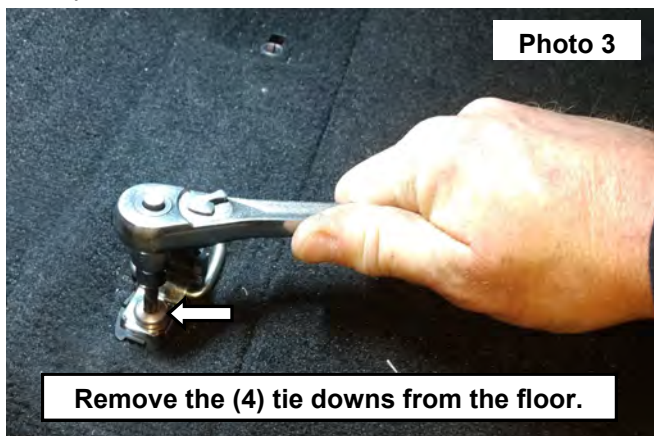


## INSTALLATION INSTRUCTIONS

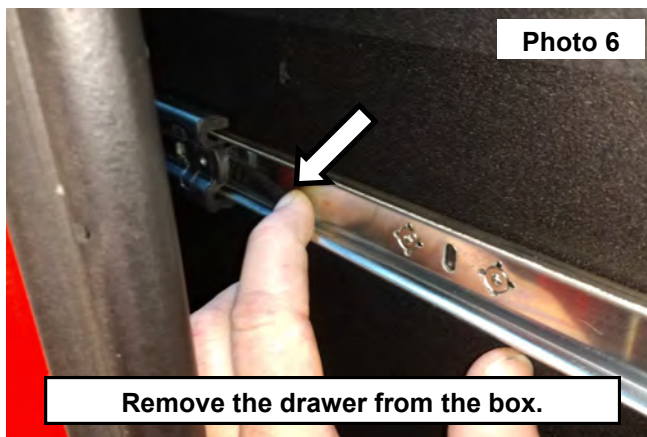
1. Shown installed in the 2018-21 JL Wrangler. If you have chosen to install the storage box into another vehicle skip to **Step 5**. If needed use the supplied spacers, use the slots in the bottom of the box as a template and drill holes to mount in your application.
2. **JLU Jeep Install shown:** Locate the (4) inner tie down mounts in the rear of the vehicle. **See Photo 1**.
3. Lift the cover to expose the bolt head on the tie down mount. **See Photo 2**.



4. Use a T40 Torx bit to remove the (4) tie downs from the floor. **See Photo 3**.
5. Place the storage box into the vehicle into the desired location if installing into another vehicle other than the JL Jeep. **See Photo 4**.

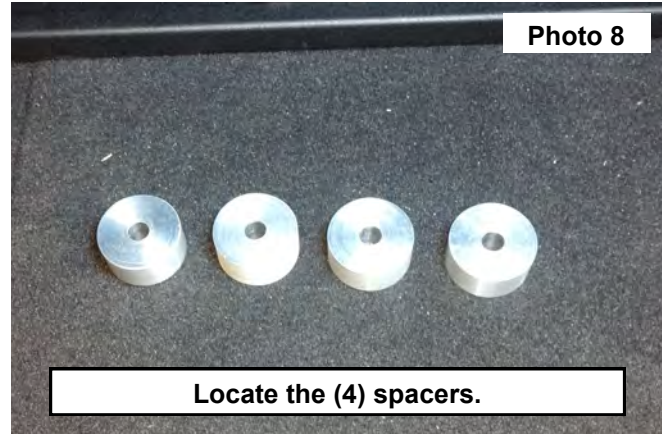
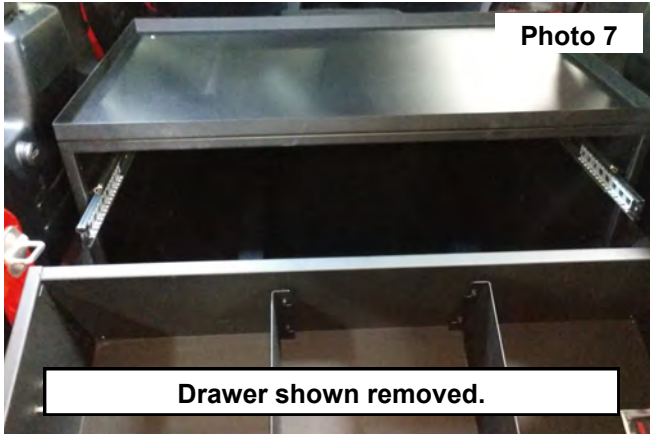


6. The storage box will install with the opening toward the rear of the vehicle. **See Photo 5**.
7. Unlock the box using the supplied keys. Open the drawer. Then compress the leaver on each side and remove the drawer. **See Photo 6**.

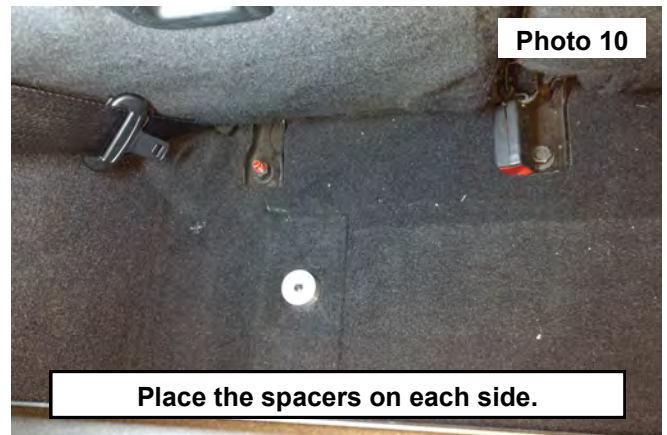




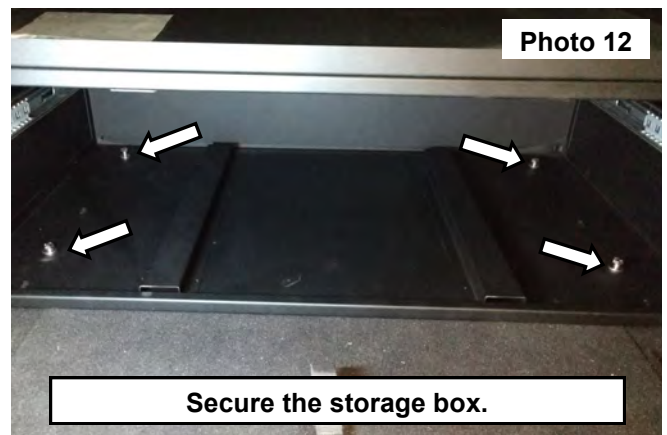
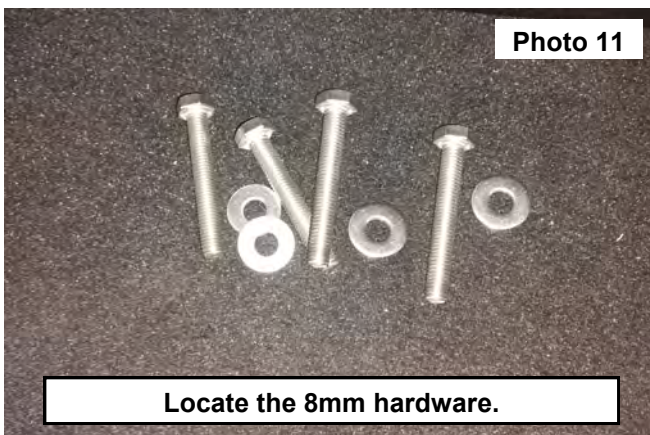
8. Drawer shown removed. **See Photo 7.**
9. If needed use the supplied spacers to elevate the box to allow the drawer to open and close without obstruction. The spacers **WILL** be used in the rear of the Jeep JL . **See Photo 8.**



10. JL Install shown in pictures. Raise each side of the storage box up and place the spacers above the threaded insert in the vehicle floor. **See Photos 9 and 10.**

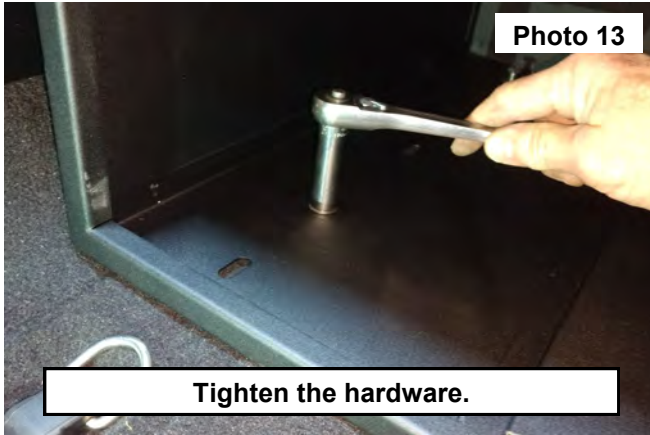


11. Locate (4) of the supplied 8mm x 55mm hex head bolts and (4) 8mm flat washers. **See Photo 11.**
12. Aline the mounting holes in the bottom of the storage box with the spacers to the threaded holes in the floor of the vehicle. If installing into another application, the supplied nuts, washers and lock washers will be used.
13. Secure the box to the floor using the supplied 8mm hardware through the threaded holes. **See Photo 12.**



14. Tighten the hardware using a 13mm socket. **See Photo 13.**

15. Place the drawer into the slides locking them into place by closing the drawer. **See Photo 14.**



16. Place the RC matt onto the top of the storage box. **See Photo 15.**



By purchasing any item sold by Rough Country, LLC, the buyer expressly warrants that he/she is in compliance with all applicable, State, and Local laws and regulations regarding the purchase, ownership, and use of the item. It shall be the buyers responsibility to comply with all Federal, State and Local laws governing the sales of any items listed, illustrated or sold. The buyer expressly agrees to indemnify and hold harmless Rough Country, LLC for all claims resulting directly or indirectly from the purchase, ownership, or use of the items.

