



CHEVY 2019-23 1500 MUDFLAP DELETE

Thank you for choosing Rough Country for all your vehicle needs.

Please read instructions before beginning installation. Check the kit hardware against the kit contents shown below. Be sure you have all needed parts and know where they go.

If question exist, please call us @1-800-222-7023. We will be happy to answer any questions concerning this product. Check all fasteners for proper torque. Check to ensure for adequate clearance between all components. Periodically check all hardware for tightness.



Torque Specs:

Size	Grade 5	Grade 8	Size	Class 8.8	Class 10.9
5/16"	15 ft/lbs	20ft/lbs	6MM	5ft/lbs	9ft/lbs
3/8"	30 ft/lbs	35ft/lbs	8MM	18ft/lbs	23ft/lbs
7/16"	45 ft/lbs	60ft/lbs	10MM	32ft/lbs	45ft/lbs
1/2"	65 ft/lbs	90ft/lbs	12MM	55ft/lbs	75ft/lbs
9/16"	95 ft/lbs	130ft/lbs	14MM	85ft/lbs	120ft/lbs
5/8"	135ft/lbs	175ft/lbs	16MM	130ft/lbs	165ft/lbs
3/4"	185ft/lbs	280ft/lbs	18MM	170ft/lbs	240ft/lbs



Kit Contents

- 1 - Front Driver Side Mud Flap Delete
- 1 - Front Passenger Side Mud Flap Delete
- 1 - Rear Driver Side Mud Flap Delete
- 1 - Rear Passenger Side Mud Flap Delete

TOOLS NEEDED:
10mm Socket or Wrench
T15 Torx Bit
Soft Cloth or Alcohol Wipe

▲ NOTICE Prior to Installation

A) Install the parts according to these written instructions with the hardware provided. **WARNING:** Failure to install according to these instructions will invalidate the warranty. This includes, but is not limited to, using alternative installation methods, hardware, or materials. **DO NOT USE:** Loctite, Superglue, or similar products on the hardware or the parts. *Install parts on cleaned vehicle surfaces.*

B) **Cleanliness:** Clean the areas where the parts will be installed thoroughly with alcohol or degreaser. Installation should be done between 60F (15C) and 109F (43C).

C) **Fit:** Verify the fit of the parts to vehicle prior to installation (some filing, sanding, or cutting may be necessary to ensure proper fit).

D) **Painting:** (Optional) if paint is desired it must be done prior to installing parts on vehicle. Clean outer surface with a good grade degreaser. **DO NOT USE LACQUER THINNER OR ENAMEL REDUCER AS A DEGREASER.** Wipe outer surface thoroughly with a tack rag prior to paint. Application of plastic adhesion promoter for ABS plastic as per your paint system manufacturer's recommendations is required. Paint parts using a high-quality enamel, or polyurethane automotive paint. If painting edge trim (not recommended), use a flex additive.

E) **Performance:** Using larger tires may increase the area required to turn the vehicle. Some tire/rim combinations may require lowering bump stops and or installing steering stops to prevent tire from contacting flare.

F) **Metal Protection:** All exposed fasteners and bare metal should be treated with rust resistant paint **BEFORE** installing parts. Spray inner fender wells with undercoating **AFTER** flare attachments have been completed.

G) **Decals:** Parts may interfere with existing decals on vehicle. If you wish, remove decals prior to installation of parts.

H) **Care & Cleaning:** Parts are built to last; any detergent you use to wash your vehicle is sufficient to clean the part. Do not use any harsh abrasive detergents.

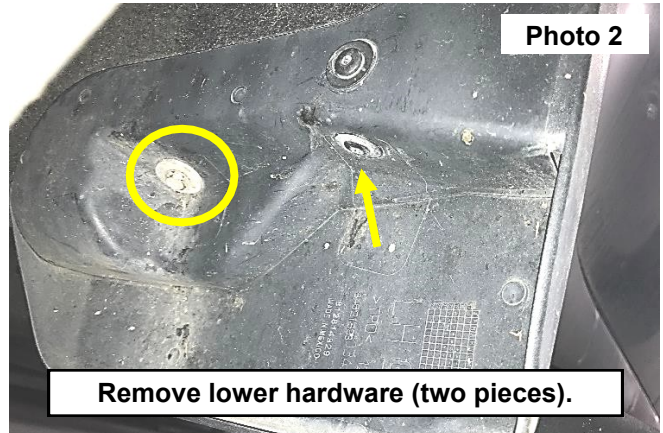
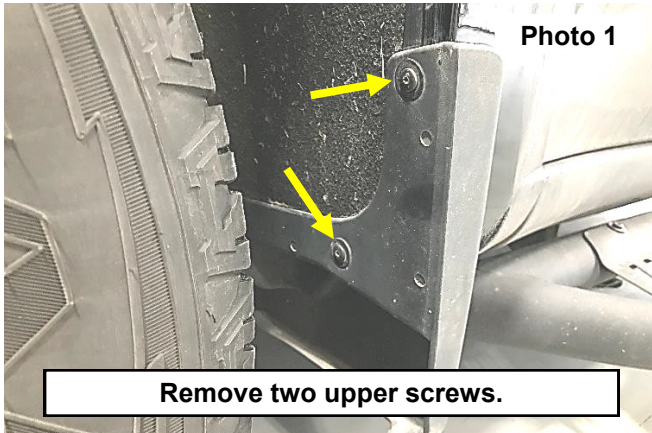
▲ NOTICE **PLEASE READ:** Dirt and debris can become lodged between the mudguard deletes and the vehicle's fenders, causing scratching and paint wear from vibration. Manufacturer is not responsible for any damage, and the installation of our parts is done with the buyer's understanding that this scratching and paint wear may occur.

LIMITED LIFETIME WARRANTY AGAINST ANY MANUFACTURING DEFECTS: To claim warranty you must provide Proof of Purchase.

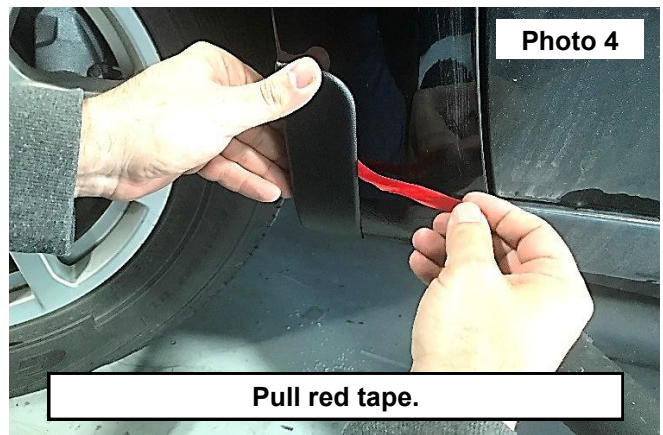


FRONT INSTALLATION INSTRUCTONS

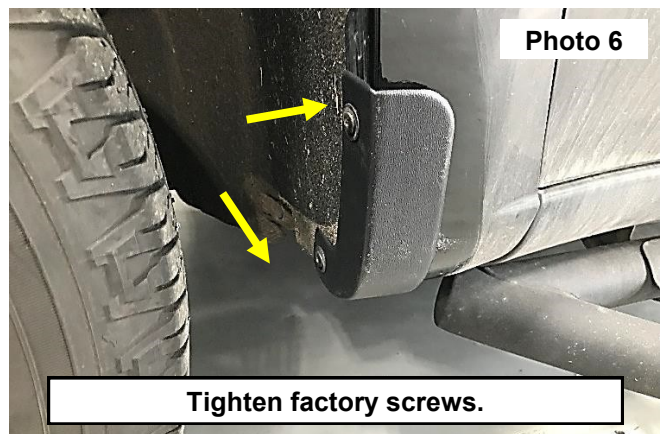
1. Use a T15 Torx bit to remove the two upper factory screws indicated by the arrows. Retain hardware for reuse. **See Photo 1.**
2. Use a T15 Torx bit to remove one screw from underside of mud flap indicated by the arrow. Use a 10mm socket to remove the factory bolt from the mud flap indicated by the circle. Remove the mud flap by firmly pulling away from the vehicle body. A hidden retaining clip will disengage. **See Photo 2.**



3. Clean the surface where the mud flap delete will fit. This will ensure the tape on the part adheres properly.
4. Hold the new front mud flap delete piece firmly on the fender keeping the red tape lead end free. Start 2 of the factory screws through the holes in the mud flap delete and into the fender. **See Photo 3.**
5. Pull red tape lead end at an angle to release the part from the tape. **See Photo 4.**

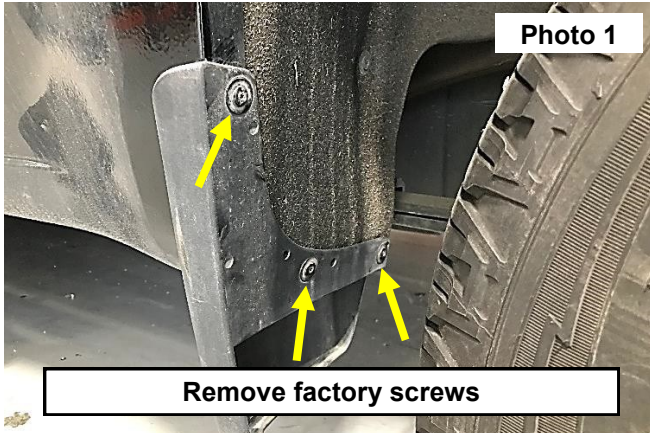


6. With the tape fully removed, press the part against the vehicle for 30 seconds to ensure full adhesion. Tape cures after 24 hours at 65 degrees. **See Photo 5.**
7. Tighten the two factory screws from Step 3. **See Photo 6.**
8. Repeat for other side of vehicle.

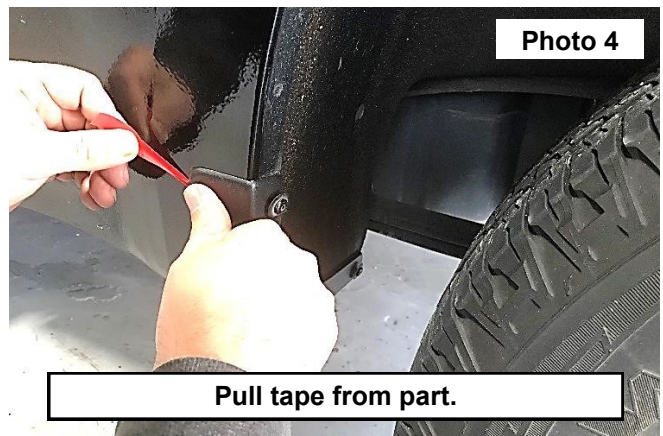
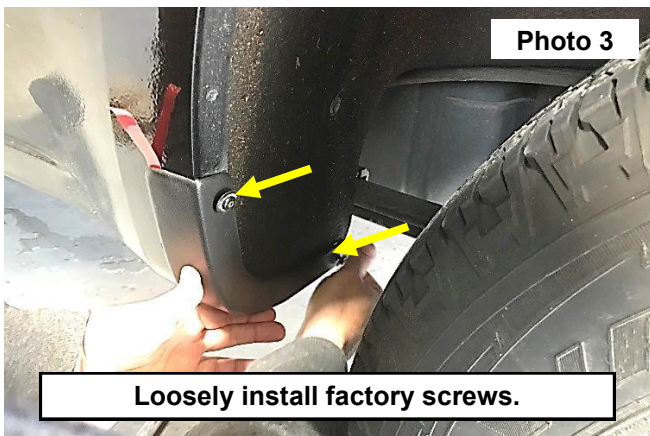


REAR INSTALLATION INSTRUCTONS

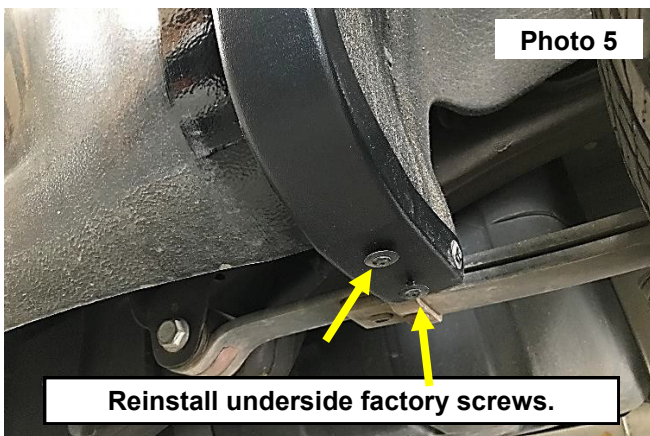
1. Remove the factory screws with a T15 Torx bit. Retain hardware for reuse. See Photo 1.
2. Remove underside factory screws with a T15 Torx bit. Firmly pull mud flap to release from vehicle. Retain hardware for reuse. See Photo 2.



3. Clean the surface where the mud flap delete will fit. This will ensure the tape on the part adheres properly.
4. Start two factory screws in factory hole location, keeping the red tape leader free to move. See Photo 3.
5. Gently pull the red tape leader away from the part. See Photo 4.



6. Press the part on the vehicle for 30 seconds now that the tape is removed.
7. Reinstall the two underside factory screws through the holes of the mud flap delete and into the fender. See Photo 5.
8. Tighten all screws with a T15 Torx bit.
9. Repeat steps for other side of vehicle.



By purchasing any item sold by Rough Country, LLC, the buyer expressly warrants that he/she is in compliance with all applicable, State, and Local laws and regulations regarding the purchase, ownership, and use of the item. It shall be the buyers responsibility to comply with all Federal, State and Local laws governing the sales of any items listed, illustrated or sold. The buyer expressly agrees to indemnify and hold harmless Rough Country, LLC for all claims resulting directly or indirectly from the purchase, ownership, or use of the items.

