

ROUGH COUNTRY

SUSPENSION SYSTEMS®

JEEP 2007-18 WRANGLER JK REAR TUBE BUMPER

Thank you for choosing Rough Country for all your vehicle needs.

Please read instructions before beginning installation. Check the kit hardware against the kit contents shown below. Be sure you have all needed parts and know where they go.

If question exist, please call us @1-800-222-7023. We will be happy to answer any questions concerning this product.

Check all fasteners for proper torque. Check to ensure for adequate clearance between all components.

Periodically check all hardware for tightness.

KIT CONTENTS:

2" Flush Mount LED Light Kit x1
 Driver Side Flag Nut Bracket x1
 Pass Side Flag Nut Bracket x1
 Tube Bumper x1
 D-rings x 2

TOOLS NEEDED:

4mm Allen Wrench
 10mm Wrench or Socket
 16mm Wrench or Socket
 17mm Wrench or Socket
 18mm Wrench or Socket

HARDWARE INCLUDED:

12mm x 60mm Hex Head Bolts x4
 12mm Lock Washer x4
 12mm Flat Washer x4



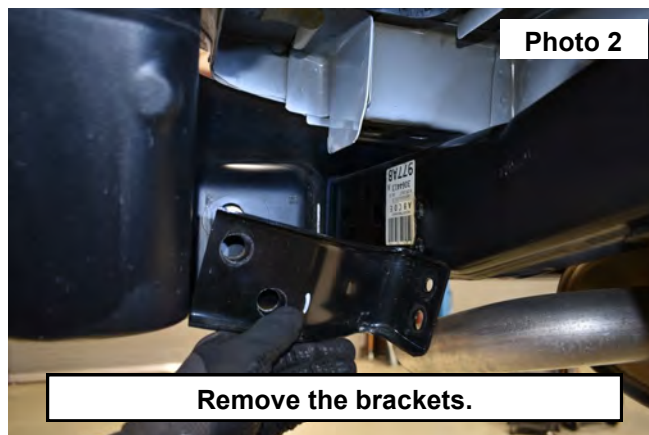
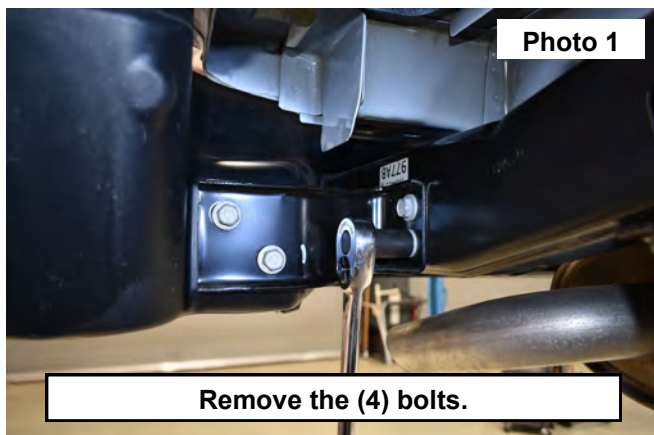
Torque Specs:

Size	Grade 5	Grade 8	Size	Class 8.8	Class 10.9
5/16"	15 ft/lbs.	20ft/lbs.	6MM	5ft/lbs.	9ft/lbs.
3/8"	30 ft/lbs	35ft/lbs	8MM	18ft/lbs	23ft/lbs
7/16"	45 ft/lbs	60ft/lbs	10MM	32ft/lbs	45ft/lbs
1/2"	65 ft/lbs.	90ft/lbs.	12MM	55ft/lbs.	75ft/lbs.
9/16"	95 ft/lbs.	130ft/lbs.	14MM	85ft/lbs.	120ft/lbs.
5/8"	135ft/lbs.	175ft/lbs.	16MM	130ft/lbs.	165ft/lbs.
3/4"	185ft/lbs.	280ft/lbs.	18MM	170ft/lbs.	240ft/lbs.



INSTALLATION INSTRUCTIONS

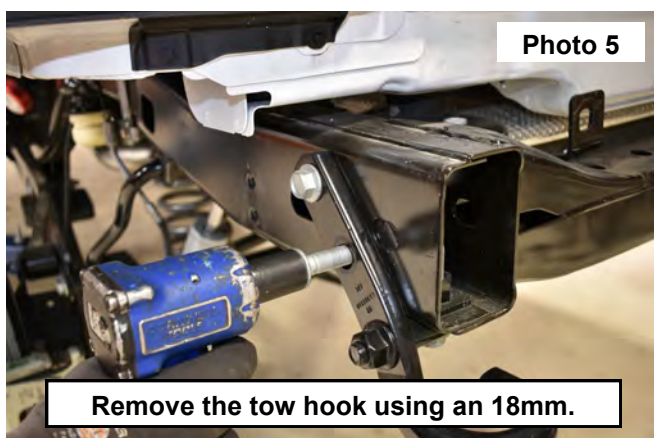
1. Remove the brackets from the stock bumper and frame as shown using a 16mm socket. Retian the stock hardware for reuse. **See Photo 1 & 2.**



2. Remove the upper bumper bolts (1 each side) as shown in **Photo 3.**
3. Remove the stock bumper from the vehicle. **See Photo 4.**



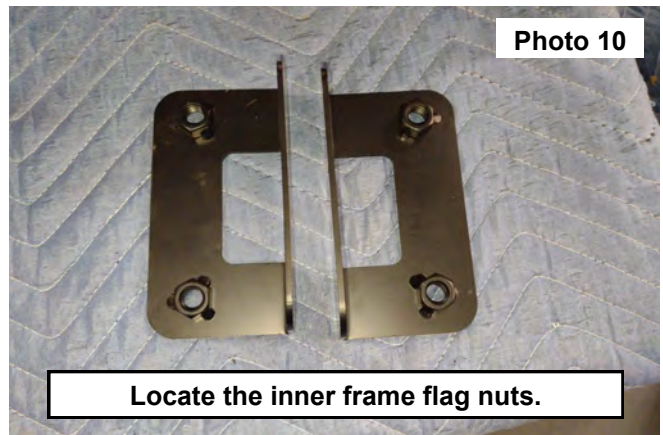
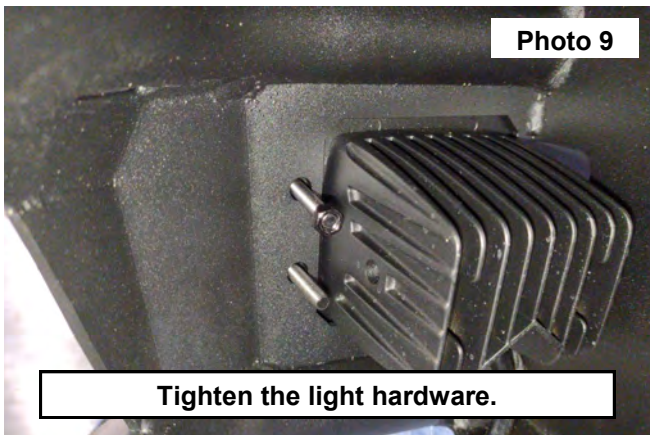
4. Using a 18mm socket, remove the stock tow hook. **See Photo 5 & 6.**



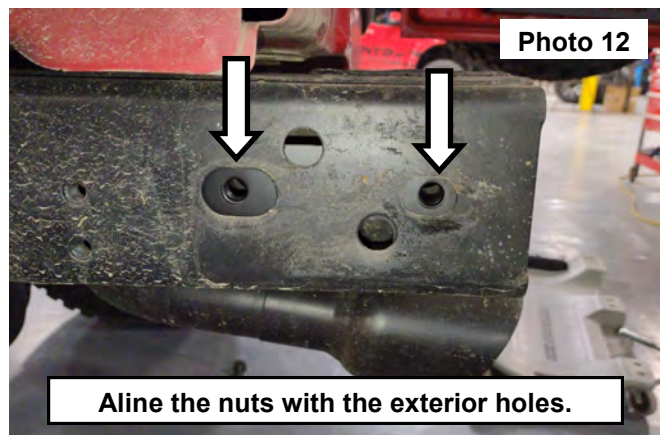
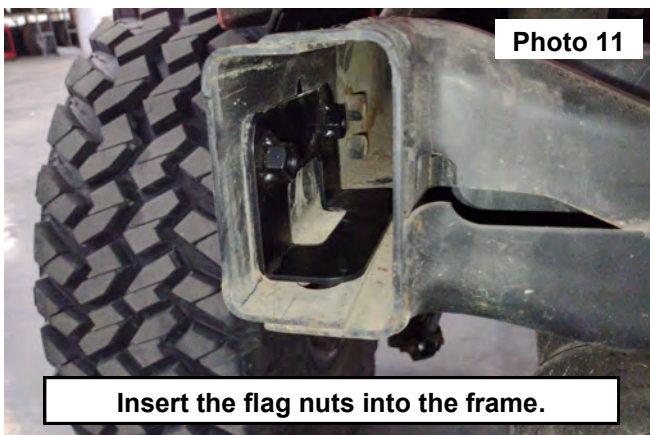
5. Remove the stock insert in the frame. **See Photo 7.**
6. Locate the new rear bumper, hardware and the flush mount LED lights.
7. Install the 2" flush mount LED lights into the rear bumper using the supplied hardware. **See Photo 8.**



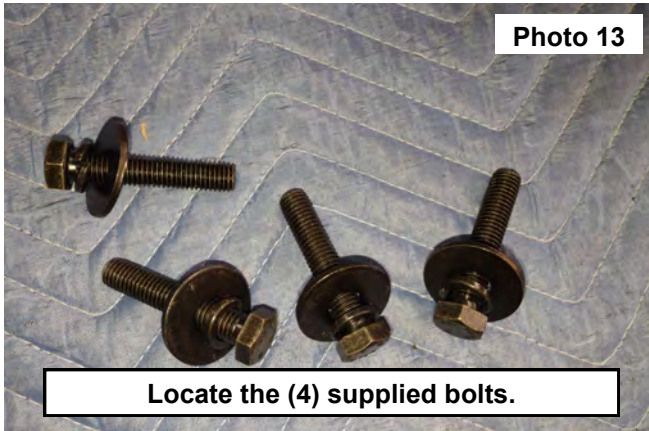
8. Secure using the supplied button head allen bolts and nuts. Tighten using a 4mm allen wrench and 10mm socket. **See Photo 9.**
9. Locate the inner frame flag nuts. **See Photo 10.**



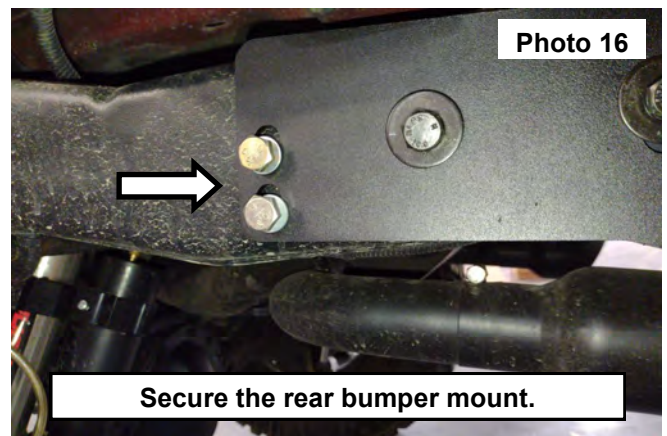
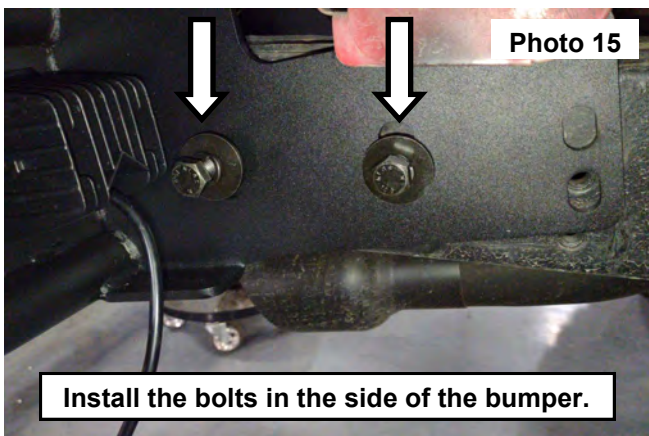
10. Place the flag nuts into the right and left side frame rail. Aline the nuts with the exterior holes on the outside of the frame. **See Photos 11 and 12.**



11. Locate the (4) supplied 12mm x 45mm hex head bolts, (4) 12mm lock washers and (4) 12mm flat washers. **See Photo 13.**
12. Support the rear bumper and install onto the frame align the holes in the side of the bracket to the frame. **See Photo 14.**



13. Install the (2) 12mm bolts and hardware through the bumper mount into the inner flag nut on the right and left side bumper mounts. **See Photo 15.**
14. Install the stock bumper bolts retained into the threaded hole as shown in **Photo 16.**



15. Align the bumper with the bottom edge of the tail gate. Then tighten the 12mm bolts using a 18mm socket and the stock bolts using a 16mm socket. **See Photos 17 and 18.**
16. Install the wiring harness to the vehicles power supply and connect to the 2" Flush mount LED lights.



By purchasing any item sold by Rough Country, LLC, the buyer expressly warrants that he/she is in compliance with all applicable, State, and Local laws and regulations regarding the purchase, ownership, and use of the item. It shall be the buyers responsibility to comply with all Federal, State and Local laws governing the sales of any items listed, illustrated or sold. The buyer expressly agrees to indemnify and hold harmless Rough Country, LLC for all claims resulting directly or indirectly from the purchase, ownership, or use of the items.

