

INSTALLATION MANUAL:

COR-1410201

JEEP GLADIATOR 0.5-2" REAR BUMP STOPS EXTENSIONS
(2020+, JT)



INCLUDED ITEMS

1410201 Jeep Gladiator 0.5-2" Rear Bump Stops Extensions - (2020+, JT)			
QTY	Part Number	Description	Class/Grade
8	PLA-HDPE	Black 4.757" x 3.175" x 0.500" Black Spacer	N/A
4	94263	5/16"-18 x 2-3/4" Hex Drive Zinc Finish Flat Socket Screw	ASTM F835
4	94259	5/16"-18 x 1-3/4" Hex Drive Zinc Finish Flat Socket Screw	ASTM F835
4	37184	5/16"-18 Yellow Zinc Finish NE Steel Nylon Insert Lock Nut	Grade 8

Product Notes and Features:

The Jeep Rear Bump Stops for Gladiator JT 2020+ are designed to limit suspension compression. Using these extensions prevents damage to your suspension components when tackling rugged terrain, specifically during a "bottom-out" driving condition.

- For use in the rear bump stop location of the JT Gladiator
- Designed to meet the demands of rugged terrain and daily driving
- Included Grade 8 hardware with a corrosion-resistant finish
- Must be used with our JT rear bump stop kit (COR-1410200)
- Mounts outside of the coil on the OEM spring pad, no spring removal required
- Total of 8, ½" tall spacers included



INSTALLATION INSTRUCTIONS

TOOLS REQUIRED FOR INSTALLATION

- Basic hand tools
- Standard sockets 1/2"
- Allen keys 3/16"

*****Take this product to a licensed professional if you are hesitant about the installation process!*****

1. Locate COR-1410200 which should already be installed on the vehicle. If it is not, please install it now following the instructions under the COR-1410200 product page.

Locate the holes on the top of the bump stop perch. Align the holes in the bump stop extensions and use the supplied 5/16" countersunk hardware and locknuts to fasten the extension to the perch.



Figure 1: Extension located on bump stop perch with bolts dropped in holes

INSTALLATION INSTRUCTIONS

2. Complete Step 1 for both sides of the rear axle. Cycle the suspension to full-flex and determine if more, or less bump stop extension is needed. Save the additional countersunk bolts if you require more bump stop extensions in the future.

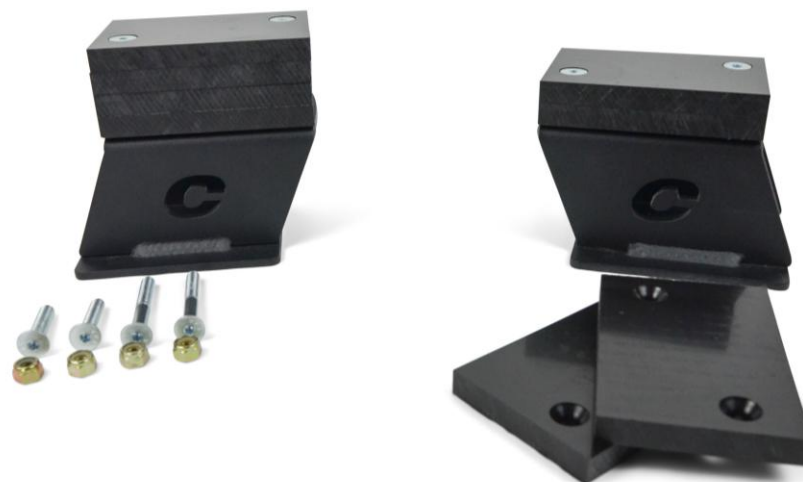
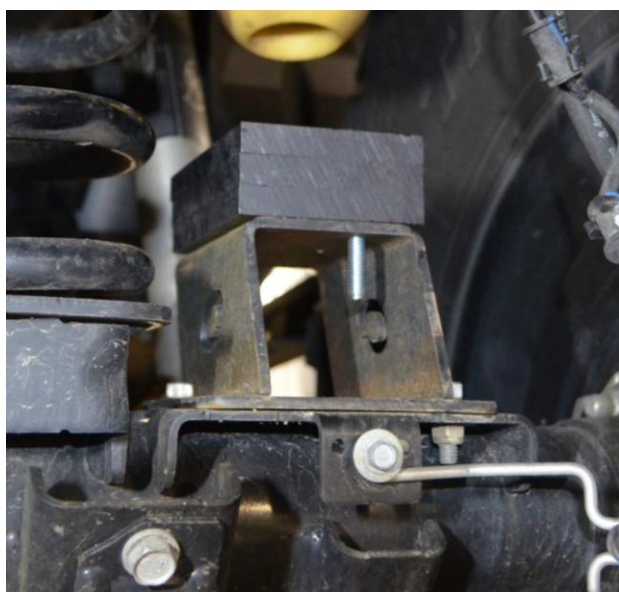


Figure 2: Photos showing various bump stop heights

INSTALLATION INSTRUCTIONS

- The installation is complete. Please ensure that both bolts holding the extensions to the bump stop perch are tightened down. Follow the post-installation checklist below before driving the vehicle.



Figure 3: Installation photo (1.5" of bump stop used)

POST-INSTALLATION CHECKLIST:

- Hardware torqued to 20 ft-lbs, or until spacer begins to bulge
- Required amount of bump stop is achieved, and suspension up-travel is properly limited

